

**DIVISION OF  
FOSTER CARE REVIEW  
FY25 ANNUAL REPORT**



South Carolina Division of  
**FOSTER CARE  
REVIEW**  
Dept. of Children's Advocacy





---

## FOSTER CARE REVIEW DIVISION

### FISCAL YEAR 2025 TABLE OF CONTENTS

---

#### INTRODUCTION

Message from the Director	4
FY25 Overview	6
Why Reviews Matter	9
FCRD Organizational Structure	10

#### FOSTER CARE REVIEW

Individual Children Reviewed	11
Board Permanency Recommendations	17
Barriers to Permanency	20
Review Timeliness	23

#### SOUTH CAROLINA HEART GALLERY

24

#### COMMUNITY ENGAGEMENT

Board Community Contributions	27
50th Anniversary	28

#### STATE BOARD OF DIRECTORS

State Board of Directors' Biographies	29
State Board Recommendations	32
Volunteer Board Members	35

---

## FOSTER CARE REVIEW DIVISION

# MESSAGE FROM THE DIRECTOR

*Lindsey Taylor*

---



It is my honor to present the Fiscal Year 2025 (FY25) Annual Report from the South Carolina Division of Foster Care Review (FCRD).

The FCRD has made significant changes over the last several years and FY25 was a year where we finally were seeing the full impact of those changes – in a good way! With the implementation of a new case management system and the official shift to a virtual review process, the last few years have been full of transition that didn't always allow us to see the outcomes or have the consistency we were hoping for in terms of our data reporting, processes, and system improvement recommendations.

This year we conducted 5309 reviews for 3558 children and were able to maintain our goal of 99% of children in care being scheduled for a timely review throughout the full fiscal year. Additionally, our continuance rate decreased notably from 20.3% in June 2024 to 13.3% in June 2025. This is in large part due to increased communication with the South Carolina Department of Social Services (SCDSS) leadership and their intentional efforts to work with SCDSS staff to ensure that FCRD received the information needed to conduct the reviews.

Last year I shared about CAMS, the new case management system and tool that the division began using to identify case delays and the causes behind those delays, the Barriers to Permanency (BPs). Both of these items resulted in improvements to our internal processes and also enhanced our data reporting and ability to identify areas where system improvements could be helpful to improve permanency outcomes for children in care. For the first time, we were able to begin reporting on BPs both to SCDSS and to board members to inform the work that we're all doing to improve the foster care system and decrease the amount of time that children have to remain out of their homes. We presented data from the BPs to board members at our regional professional development trainings to provide guidance on potential advocacy opportunities. The data was also regularly shared with the SCDSS leadership team via the division's quarterly reports to highlight the areas that we saw were causing the most delays to permanency based on the information provided during the case reviews. This year's report is the first time that BP data has been included and we're very excited to share this information publicly moving forward in the hopes that it will be valuable to all those who are working to improve the foster care system every day.

During the course of this year, CAMS attained additional functionality and allowed for enhanced documentation and improved processes. We also began the long-awaited work on integrating it with the SCDSS system to allow case information to be received and sent automatically, which will allow for even greater efficiencies for both FCRD and SCDSS staff once this project is complete.

Another considerable project that the division undertook this year was updating the state regulations that govern the Foster Care Review Board's operations. This is something that hasn't been done in over 20 years and they were desperately in need of updates to accurately reflect recent changes to both the foster care system and the review process and also to clarify some of the requirements and expectations for how the board functions. This initiative was spearheaded by the division's general counsel and at the close of the fiscal year we had a working draft that had been presented to the State Board of Directors and the Bench Bar Committee for feedback and to identify any potential concerns for the next steps in the regulation promulgation process. We're looking forward to getting additional input from stakeholders and moving this forward in FY26.

The South Carolina Heart Gallery (SCHG) also continued to build and grow with the addition of a new program assistant position to provide support and increase capacity. The SCHG staff were innovative in their approach and began to hold photo and video shoots at recruitment events that SCDSS Adoptions staff had already planned in an effort to be more efficient and minimize the number of events that children needed to participate in. We were also able to continue our relationship at Columbiana Centre and, although we lost our storefront, they provided us space for a large semi-permanent exhibit inside one of the busiest entrances. In addition to the photo and video shoots and standing exhibits, the SCHG was invited to appear on Lowcountry Live, a morning show on ABC4 in Charleston, which led to another exhibit opportunity.

This year was extremely rewarding as we began to really feel the impacts of all of the changes we've been making over the last few years and started to see the outcomes of the growth that we've been striving for. Our staff and volunteers demonstrated resilience and a focus on continuous quality improvement as we worked out kinks and began utilizing data we haven't had access to before. I'm very excited to continue this work in FY26.



LINDSEY TAYLOR

*Director, Foster Care Review Division,  
SC Department of Children's Advocacy*



---

## FOSTER CARE REVIEW DIVISION

# FY25 OVERVIEW

---

### ***INTRODUCTION***

The Division for Review of the Foster Care of Children (herein called Foster Care Review Division or FCRD) is led by Director Lindsey Taylor and includes state office staff who support the work of the South Carolina Foster Care Review Board (FCRB). The FCRB was created in 1974 to provide external accountability for the foster care system, review the cases of children in foster care, and advocate for permanency. Board members are nominated by their legislative delegations and appointed by the governor. South Carolina was the first state to enact a system of citizen review responsible for helping improve permanency outcomes for children in foster care. The FCRB consists of a state board and 43 local review boards. The local review boards review cases of children after they have been in foster care for four to six months and then every six months thereafter, for as long as the child remains in the custody of the Department of Social Services (DSS).

### ***REVIEWS OF CHILDREN IN FOSTER CARE***

During state fiscal year 2024-2025 (FY25), FCRB reviewed the cases of 3558 individual children, many of whom received more than one case review during the year. The division and board members continued to embrace the enhanced accessibility provided by virtual reviews via Microsoft Teams. The virtual meeting format allowed invited parties greater opportunities to participate as they could attend from anywhere, and children and youth could attend virtual reviews without missing whole school days. The Teams platform presented performance and connectivity issues at times, so work began to transition back to the WebEx platform in an effort to resolve the connectivity issues related to internet bandwidth. The switch to WebEx is expected to occur during the first quarter of FY26.

### ***ANNUAL AND QUARTERLY REPORTING***

FCRD monitors and reports (quarterly and annually) progress in achieving permanent plans for children in foster care. Monthly and quarterly reports were issued to DSS timely, and the the FY24 Annual Report was published to the DCA and FCRD websites in June 2025. Distribution of printed copies of an abbreviated version of the annual report began in July 2025.

### ***Replacing CASPER***

Funding to replace CASPER, an 18-year-old database, with an updated and flexible case management system, was approved in the FY23 budget. Working with a state-approved vendor, the new system, CAMS (Child Advocacy Management System), was designed and built during FY23. CAMS launched during the first half of FY24 and underwent a series of fixes and enhancements in the months that followed. The CASPER system was unable to provide data and reports that could improve advocacy and permanency for children including specific data regarding overdue hearings. Additionally, the system was built in a program that was quickly becoming obsolete, so enhancements and access to technical support were limited. CAMS improved the division's ability to track, analyze, and use data to advocate for children. It also heightened employee efficiency, provided access to technical support, and allowed FCRD to begin the transition toward paperless record keeping. Database enhancements continued throughout FY25, and the transition to paperless record keeping was nearly completed.



### **TRAINING AND TEAM BUILDING**

FCRD hosted eight in-person regional professional development training sessions serving 225 participants. The accessibility of virtual meetings also made it possible to continue to host the Lunch & Learn training series regarding child welfare practice, available services and resources, and collaboration opportunities. Training sessions were designed to ensure that board members have ongoing access to relevant and updated information concerning our state's foster care system. Hazardous weather during hurricane season in fall 2024 created disruptions to the in-person training schedule. To avoid future disruptions due to hazardous weather, in-person regional professional development (RPD) sessions were scheduled in the spring of 2025 and the virtual Annual Professional Development (APD) training was moved from the Spring to the Fall. The APD session will occur after FY25 ends. In addition to ongoing trainings, FCRD held monthly employee team meetings to work towards building team unity and strengthening practice consistency. A new position for the Heart Gallery created a team vacancy, and on April 2, 2025, that vacancy was filled. FCRD remained fully staffed through the end of the fiscal year.

### **CONTINUOUS QUALITY IMPROVEMENT**

As reported in previous annual reports, DCA Director Amanda Whittle asked the Office of Inspector General to conduct an efficiency study of the FCRD and FCRB to assist with improving processes, workflows, workloads, and outcomes. Foundational work to address these concerns began in FY22 and continued through FY25. Key recommendations included:

- Creating a system of accountability for Areas of Concern (AoCs)
- Improving communication through updating policies with executive director review and approval
- Reviewing and update inconsistent statutes between FCRD and the Department of Children's Advocacy (DCA), and among FCRD, the Department of Social Services (DSS), and the Guardian *ad Litem* program (GAL)
- Improving communication among DCA, FCRD, GAL, DSS, the judiciary, and other partners
- Identifying more efficient ways to fill board and staff vacancies
- Adhering to the statutory names for Foster Care Review Division (FCRD) and Foster Care Review Board (FCRB)

---

### ***Create a system of accountability for Areas of Concern***

On July 1, 2023, the first day of FY24, FCRD shifted from Areas of Concern (AoCs) to the newly developed Barriers to Permanency (BPs). FCRD records BPs, a set of obstacles delaying progress toward permanency that volunteer board members and FCRD staff identify during case review meetings. BPs help to identify a more comprehensive set of root causes slowing both progress to permanency and the ability to meet mandated compliance standards. Over the next several months, the BPs were modified to reflect necessary updates, and the current iteration of the BPs was implemented in the third quarter of FY24. A delay with the CAMS database enhancement adversely impacted FCRD staff's ability to accurately document BPs in the database until after FY24 ended. This issue was resolved by the end of the first quarter of FY25, and the BP system enhancement was fully implemented in the CAMS database. These enhancements also made it possible to conduct ongoing BP tracking and reporting.

### ***Improve communication through updating policies with executive director review and approval***

FCRD continued to review division policies and procedures. The policy committee, comprised of FCRD leadership and staff, continued to meet throughout FY25 to review and submit suggestions for policy updates. The policy committee submitted drafts of needed policies to Director Taylor for review prior to the end of the fiscal year and the series of new policies is expected to roll out during the first quarter of FY26.

### ***Review and update inconsistent statutes between FCRD and DCA, and among DSS, FCRD, and GAL***

Statutory changes remain a long-range goal on both fronts, and efforts that began in FY23 to effect these changes continued throughout FY25. Progress included minor statutory changes to reflect the division director's employment process and the diligent work of division leadership to clearly articulate and train volunteer board members and FCRD and DSS staff on the existing statutory requirements for reviews to ensure compliance.

### ***Improve communication among DCA, FCRD, GAL, DSS, the judiciary, and other partners***

The FCRD continued to engage in increased and improved communication and collaboration with several key partners, most notably with DSS:

- Joint collaborative sessions with DSS and board members
- Participation in the delivery of Child Welfare Academy certification training required for new child welfare staff at DSS
- Meet quarterly with DSS leadership

These initiatives continued to strengthen FCRD staff's understanding of updated DSS policies and practices, improved communication with DSS, and afforded FCRD the opportunity to educate new DSS staff on FCRD's mission, values, and statutory requirements. FCRD's training and volunteer coordinator continued to work directly with board members to improve communication and provide ongoing learning opportunities.

### ***Identify more efficient ways to fill board and staff vacancies***

While FCRD's staff vacancies were all filled by the end of FY25, the number of board member vacancies continued to be a concern for FCRD's efforts to improve the FCRB's impact on permanency outcomes. During FY23, the division developed a comprehensive communication plan and feedback loop to ensure that local legislative delegations are aware of the vacancies and the impact vacancies have on FCRB functionality. FCRD tracks the number of board members and vacancies by appointment, reappointment, or resignation. During FY25, FCRD staff continued to track and review vacancies and worked to raise awareness in the community and among legislative delegations about vacancies.

### ***Adhere to the statutory names for Foster Care Review Division (FCRD) and Foster Care Review Board (FCRB)***

Agency and division leadership and staff continued earlier efforts to clearly define and consistently communicate the difference between the FCRD and the FCRB. Adherence to the statutory names for each entity has been fully adopted.

---

## FOSTER CARE REVIEW DIVISION WHY REVIEWS MATTER

---

The foster care system is intended to provide secure living situations for children in unsafe circumstances before returning or transitioning to a permanent home. Foster care is intended as a temporary response. Generally, the longer the duration in foster care, the poorer a child's long-term outcomes tend to be. Across the US, many children spend extended periods of time in foster care. In this section, we introduce the foster care system to clarify the need for a foster care review process.

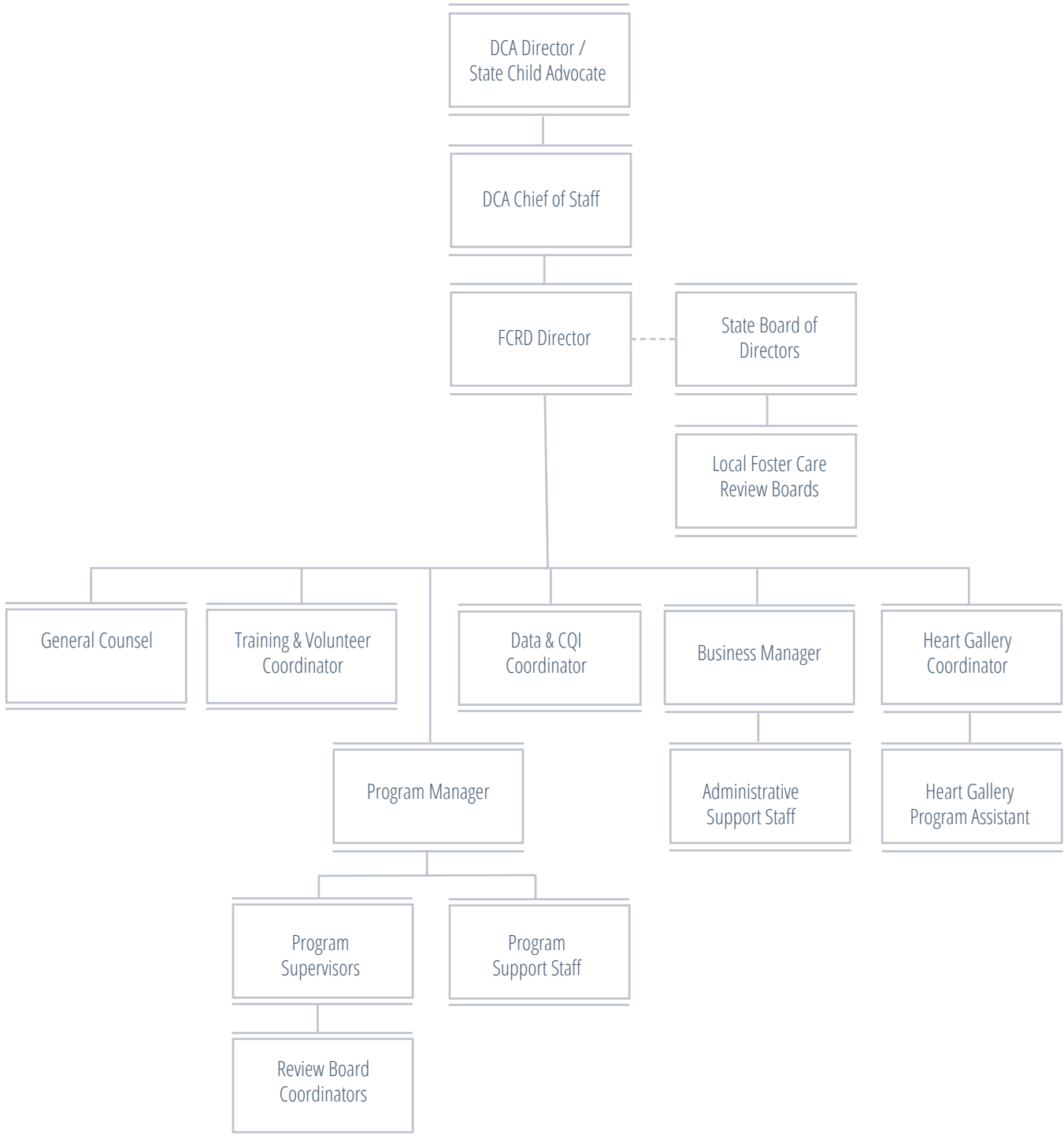
In cases of neglect, abuse, voluntary relinquishment, or other circumstances when children cannot stay with their family of origin, fostering is a transitional period before a permanent home is secured for the child. Achieving permanency can occur in multiple ways, and historically the two most common ways were through reunification or adoption. In recent years, South Carolina's child welfare system, led by DSS, embraced a family first or kin first approach resulting in a shift in permanency outcomes. The two most common permanency exit types are now reunification or relative custody or guardianship (rather than reunification or adoption). Reunifying a child with their family after safety and well-being is assured remains the preferred permanency outcome. Sometimes reunification in a timely manner is not feasible and other options need to be considered. Importantly, achieving a permanent placement in a timely manner is necessary for child well-being. A substantial body of research indicates that when children in foster care are not placed in a permanent home in a timely manner, they can experience outcomes that negatively affect their lives well into adulthood. Prolonged duration in care also risks institutional trauma beyond the initial causes for entering care. If timely permanency is not achieved, this could result in children in care undergoing an "aging out" process as they reach legal adulthood. Helping to mitigate prolonged stays in foster care is one of the primary purposes of the foster care review system.

In the mid-1970s, the state of South Carolina established the FCRB to monitor progress toward a permanent home for every child in foster care. In 2019, the FCRD was brought under the new Department of Children's Advocacy (DCA) to continue its efforts. In addition to providing organizational oversight to local FCRB meetings, FCRD staff take other approaches to help children attain permanency. FCRD coordinators conduct additional advocacy work as the need arises, and many board members volunteer their time and talents in the community. Further, the South Carolina Heart Gallery serves as a central hub to publicize the need for adoptive homes for children on that path to permanency. The foster care system in South Carolina is a large, complex network of professionals across many child-serving agencies collaborating to address severe social problems. In this annual report, we have summarized analyses of data gathered during several thousand foster care child review meetings that occurred during the year. More detailed information may be found in the separate appendix document published on the FCRD website. We hope that this information proves useful to all persons interested in the welfare of South Carolina's children who reside in foster care.



**FOSTER CARE REVIEW DIVISION**

**ORGANIZATIONAL  
STRUCTURE**



---

## FOSTER CARE REVIEW DIVISION

# INDIVIDUAL CHILDREN REVIEWED

---

### OVERVIEW OF CHILD CHARACTERISTICS

In state FY25 (July 1, 2024 through June 30, 2025), Foster Care Review Board volunteers completed 5309 child reviews for 3558 individual children in the South Carolina foster care system. Of the 3558 children reviewed during the fiscal year, 1845 children were reviewed once, 1675 children were reviewed twice, and 38 children were reviewed three times. While siblings are typically reviewed together, the board makes recommendations for each child as an individual (siblings may receive different permanency recommendations). Though rare, there are also instances of reviews occurring for some siblings in a family while being continued for other siblings. For these reasons, it is necessary to deliver data by the count of children (child reviews) rather than the count of sibling groups or cases (case review meetings) to provide the most accurate presentation. Importantly, because children are not reviewed until they have been in foster care for a minimum of four months, these data do not represent all children who spent time in foster care during FY25. Many children enter foster care and exit to permanency before their first review meeting occurs. Regardless, we believe that useful understanding can be gained by considering children in foster care whose cases were not closed within the initial four to six month period.

#### Gender

Similar to the two most recent fiscal years, more boys (1880) than girls (1678) were reviewed in FY25. Boys composed 52.8% of the individual children reviewed during FY25 and 50.9% of all children in the general population of South Carolina (statewide population data obtained from Annie E. Casey's 2024 KIDS COUNT Data Center). Due to the limitations of the data

collected, information in this report refers only to each child's biological gender or gender assigned at birth. At this time, data is not available for gender identity (the child's personal experience of their own gender which does not necessarily align with their biological gender or gender assigned at birth).

#### Race

More than nine in 10 children reviewed in FY25 were identified as Multi-Racial, Black or African American, or White. Relative to the proportion in the general population of South Carolina's children, children identified as Black or African American and Multi-racial composed disproportionately large groups. Very few children from American Indian or Alaska Native, Asian, or Native Hawaiian or Other Pacific Islander backgrounds had a completed child review (combined total less than 1% of all children). White and Hispanic children were underrepresented. Note that children identified as Hispanic may be of any race; however, the data collected and the data provided by KIDS COUNT regarding the general population of children in South Carolina includes Hispanic origin as a standalone race category (not duplicated in multiple categories). Race information for 23 children was not reported.

Racial Identification	Count of Children with Completed Review(s) in FY25	Estimate of Children in SC General Population (Kids Count)
American Indian or Alaska Native	12 (0.3%)	0.3%
Asian	9 (0.3%)	2.0%
Black or African American	1371 (38.5%)	27.5%
Hispanic	125 (3.5%)	12.5%
Native Hawaiian or Other Pacific Islander	9 (0.3%)	0.1%
Two or More Races "Multi-Racial"	380 (10.7%)	4.6%
White	1629 (45.8%)	53.0%
Unknown/Not Reported	23 (0.6%)	N/A

## Gender and Race

While the gender and racial identification of children are related to practice considerations, the overlapping identities—both gender and race—are also important in understanding the total number of children in care. Relative to their female counterparts with the same racial identification, Black or African American males were underrepresented while White males and Multi-Racial males were overrepresented. Slight disproportionality was also noted in the other race groups; however, this finding is impacted by the relatively low number of children reviewed from each of these groups.

Racial Identification	Count of All Children Reviewed in FY25	Count of Male Children	Count of Female Children
American Indian or Alaska Native	12 (0.3%)	6 (0.3%)	6 (0.4%)
Asian	9 (0.3%)	5 (0.3%)	4 (0.2%)
Black or African American	1371 (38.5%)	702 (37.3%)	669 (39.9%)
Hispanic or Latinx	125 (3.5%)	52 (2.8%)	73 (4.4%)
Native Hawaiian or Other Pacific Islander	9 (0.3%)	5 (0.3%)	4 (0.2%)
Two or More Races "Multi-Racial"	380 (10.7%)	215 (11.4%)	165 (9.8%)
White	1629 (45.8%)	880 (46.8%)	749 (44.6%)
Unknown or Not Reported	23 (0.6%)	15 (0.8%)	8 (0.5%)

## CHILD AGE AT TIME OF LAST REVIEW

Our analysis of age is based on child's age, in years, at the time of the child's most recent completed review. In FY25, the average age for children on the date of their review meeting mirrored FY24 at 9.4 years (standard deviation of 5.6), ranging from newborn to 18 years. Standard deviation (SD) is a measure of the variation of all values in a dataset relative to the mean or average of that dataset. Low SD indicates that the values in the dataset are close to the average while a high SD indicates that the values are spread out over a wider range. KIDS COUNT data derived from the Adoption and Foster Care Analysis and Reporting System (AFCARS), made available through the National Data Archive on Child Abuse and Neglect, provides demographic information about children in care. The most recent data available from this source and from the AFCARS dashboard is included in the table below for comparison. Relative to the overall population of South Carolina children, children in foster care who were younger than five were overrepresented, children age 15 and older were overrepresented, and children between the ages of five and 11 were underrepresented. Additional detail regarding age at time of review is available in the appendix.

Age Category	Children by Age Group on Date of Most Recent Review	2024 General Population SC Children by Age Group	SC Children in Foster Care on 7/1/2024 by Age Group	United States Children in Foster Care on 9/30/2024 by Age Group	2024 General Population US Children by Age Group
< 5 Years	1049 (29.5%)	295,722 (25.7%)	975 (29.3%)	105,524 (34.8%)	18,599,314 (25.4%)
5 - 11 Years	1128 (31.7%)	443,682 (38.5%)	1054 (31.7%)	99,745 (32.9%)	28,495,246 (39.0%)
12 - 14 Years	544 (15.3%)	198,081 (17.2%)	550 (16.5%)	41,481 (13.7%)	12,603,580 (17.2%)
15+ Years	837 (23.5%)	214,586 (18.6%)	749 (22.5%)	56,108 (18.5%)	13,434,580 (18.4%)



### Age and Gender

Average age at the time of most recent review during FY25 was about the same as the average age in prior years for girls and for boys. Children who were reviewed multiple times during the fiscal year are not duplicated in this data. Consistent with prior years, girls tended to be older than boys on average, (girls were about eight months older than boys at the time of their most recent review).

Gender	FY23 Average Age in Years (SD)	FY24 Average Age in Years (SD)	FY25 Average Age in Years (SD)
Female	9.9 (5.7)	9.7 (5.7)	9.8 (5.6)
Male	8.9 (5.4)	9.1 (5.5)	9.1 (5.6)

### Age and Race

As with gender, age differences across racial groups may correspond with children’s experiences in foster care. With an average age of 4.7 years, American Indian or Alaska Native children reviewed in FY24 were younger when compared to other racial groups. In contrast, American Indian or Alaska Native children reviewed in FY25 were the oldest group with an average age of 12.4 years. The relatively small number of American Indian or Alaska Native children likely contributed to this finding. Hispanic children were the second oldest group of children reviewed in FY25, with an average age of 12.0 years. Asian children were the youngest group with an average age of 7.9 years at time of most recent review.

### Age across Gender and Race

Sharper differences became evident in average ages when children’s gender and racial identification were considered simultaneously. The age difference across gender was greatest among American Indian or Alaska Native children, Asian children, and Native Hawaiian or Other Pacific Islander children. Each of these groups included a relatively small number of children, and this factor likely contributed to the differences in average age. On average, American Indian or Alaska Native girls were about two years older than boys, Asian girls were about two and a half years younger than boys, and Native Hawaiian or Other Pacific Islander girls were three years older than boys.

Racial Identification	All Children Average Age in Years (SD)	Female Children Average Age (SD)	Male Children Average Age (SD)
American Indian or Alaska Native	12.4 (3.6)	13.5 (2.6)	11.3 (4.3)
Asian	7.9 (5.6)	6.6 (5.3)	9.0 (6.2)
Black or African American	9.6 (5.6)	10.0 (5.6)	9.3 (5.6)
Hispanic or Latinx	12.0 (5.5)	11.7 (5.8)	12.3 (5.2)
Native Hawaiian or Other Pacific Islander	9.8 (3.8)	11.5 (3.9)	8.5 (3.5)
Two or More Races "Multi-Racial"	8.8 (5.7)	8.6 (5.6)	9.0 (5.8)
White	9.2 (5.6)	9.6 (5.6)	8.8 (5.5)
Unknown or Not Reported	5.8 (4.7)	7.3 (6.0)	5.0 (3.9)

## DURATION OF STAY IN FOSTER CARE

Shorter durations of stay in foster care are associated with better outcomes for children. In this section, we include information about average and median durations of stay. Averages are impacted by outliers (children in care for periods of time much shorter than the average or much longer than the average), so it is important to also consider the median length of stay. The data for children with the longest stays in foster care skew the averages, and this may distort our understanding of typical trends. For all children reviewed in FY25, the average duration of stay at the time of the child's most recent review was 21.7 months (SD 20.7), and the median duration was 15.8 months. The shortest duration was 1 month (a child who was reviewed earlier than the typical four to six months after exiting foster care and then re-entering foster care later that same day, just a few weeks prior to an already scheduled review). The longest duration was 206.4 months (17 years, 2 months, and 3 days).

### Distribution of Duration of Stay

Once a child enters foster care, the goal is to achieve permanency (foster care exit) as soon as safely possible. For this reason, most children who enter foster care tend to exit after a short period (often before the first review even occurs). About two out of every five children reviewed (42.2%) had been in foster care for less than one year at the time of their most recent review. Slightly more than one fourth of children reviewed (27.8%) had been in foster care between one and two years. About one in six children reviewed (16.3%) had been in foster care for more than three years at the time of their most recent review during FY25, a decrease from the FY24 rate of 19.2%.

Length of Stay in Foster Care at Time of Most Recent Review	FY24 Percent of Children Reviewed	FY25 Percent of Children Reviewed
Less than 1 Year	36.0%	42.2%
1 to 2 Years	29.4%	27.8%
2 to 3 Years	15.5%	13.7%
3 to 4 Years	7.6%	7.1%
4 to 5 Years	5.1%	3.4%
5 to 6 Years	2.7%	2.4%
6 to 7 Years	1.2%	1.4%
7 or More Years	2.5%	2.0%

### Race and Duration of Stay

Duration of stay differs slightly across racial groups. At the time of most recent review, Multi-Racial children had the highest average duration of stay in care while Asian children had the highest median duration of stay. American Indian or Alaska Native children had the lowest average and median durations of stay in care.

### Gender and Duration of Stay

Minimal difference in duration of stay was observable across gender. At the time of most recent review, boys had an average duration of 22.1 months (SD 21.8), about one month longer than girls' average duration of 21.3 months (SD 19.4). Median duration was 15.5 months for boys and 16.2 months for girls.

Racial Identification	Children Reviewed	Average Duration (SD)	Median Duration
American Indian or Alaska Native	12	16.0 Months (16.8)	4.9 Months
Asian	9	21.6 Months (6.8)	24.4 Months
Black or African American	1371	21.2 Months (21.4)	14.9 Months
Hispanic or Latinx	125	22.3 Months (19.5)	17.7 Months
Native Hawaiian or Other Pacific Islander	9	17.7 Months (8.1)	18.2 Months
Two or More Races "Multi-Racial"	380	23.9 Months (21.5)	16.5 Months
White	1629	21.8 Months (20.2)	16.2 Months
Unknown or Not Reported	23	7.2 Months (3.0)	5.9 Months

---

## 15 out of 22 Months

Most children who interact with the child welfare system never enter foster care. Placement in foster care is intended to be reserved only for the most severe cases of child maltreatment where it is not possible for a child to remain safely in their home or with kin/fictive kin with measures in place to eliminate threats to the child's safety. Many of the children who enter foster care exit within the first few months and therefore never receive a review by the FCRB. The children with the longest durations of stay are presumably children whose family situation remains unsafe, preventing reunification, and where no kin or fictive kin placement is feasible. When a child has been in foster care for 15 out of the most recent 22 months, federal child welfare law requires that DSS petition the family court to terminate the child's parents' rights, absent compelling reason(s) to continue with a plan of reunification. This "15/22 rule" heavily impacts the child's permanency path.

To best understand the impact of the "15/22 rule" on child permanency, we look further than the duration of stay at each individual child's most recent review and instead consider the duration of stay at all foster care board reviews that the child experienced during the fiscal year. Out of 5309 child reviews completed during FY25, 2767 of the children (52.1%) had been in foster care for at least 15 consecutive months at the time of their last review (a 6.8% decrease from FY24). Of those, 1900 children (68.7%) received recommendations for a permanent plan of adoption or termination of parental rights and adoption from the FCRB. We explore board recommendations more closely in the next section.

It is important to note, that due to limits with our data collection, we are only able to provide data regarding children who had been in care for 15 or more consecutive months. This means that children who had been in care for 15 or more non-consecutive months due to a foster care exit and re-entry within a 22 month period may be excluded in this data set.



---

## FOSTER CARE REVIEW DIVISION

# BOARD PERMANENCY PLAN RECOMMENDATIONS

---

### **BOARD RECOMMENDATIONS**

In FY25, FCRB members completed 5309 child reviews for children in foster care (a 16% increase over the number of reviews completed in FY24). A total of 3558 children were reviewed (1845 children were reviewed once, 1675 children were reviewed twice, and 38 children were reviewed three times). An additional 954 child reviews scheduled to occur were continued for a variety of reasons, and another 247 were canceled due to hazardous weather or scheduling issues. Of the reviews that were completed, board members made a permanency recommendation for each individual child. While a permanency recommendation is typically the same for each sibling involved in a review, this is not always the case since each child's situation is considered individually and there are times when the most appropriate permanency plan may differ for siblings given their unique circumstances.

Permanency recommendations for children are grouped into four categories: Reunification, Adoption, Relative Custody or Guardianship, and APPLA (Another Planned Permanent Living Arrangement). In past reports, Relative Custody and Relative Guardianship were grouped separately and at times also grouped separately from Non-relative Custody and Non-relative Guardianship, but a number of changes impacting these permanency options have occurred over recent years which necessitated combining these plans into one category for the most accurate data reporting. APPLA is reserved for youth 16 and older. This plan involves making intensive, ongoing efforts to achieve

the other plans of Reunification, Adoption, and Relative Custody or Guardianship. According to Section 63-11-720(A)(3) of the SC Children's Code, the most preferred permanent plans for children are reunification (when in the child's best interest) and adoption.

In FY25, 26.2% of the permanency recommendations were for Reunification, 51.3% were for Adoption, 13.7% were for Relative Custody or Guardianship, and 8.8% were for APPLA. The reduction in case continuances and improvement in review scheduling processes both contributed to the substantial increase in completed reviews, resulting in a higher total number of permanency recommendations.

A look at board recommendations made over the most recent fiscal years reveals an increase in the rates of Reunification recommendations and Relative Custody or Guardianship recommendations. Adoption recommendations declined 12.7% since FY22. The rate of APPLA recommendations has fluctuated the least.

Since reviews are scheduled to occur within four to six months of foster care entry and then again every six months after the first review, many children were reviewed more than once during FY25. Children who received multiple reviews during the fiscal year are counted in the subsequent permanency recommendations data multiple times (counted once per review completed).

Board Recommendation Category	Fiscal Year 22	Fiscal Year 23	Fiscal Year 24	Fiscal Year 25
Reunification	1221 (21.2%)	1222 (23.0%)	1023 (22.3%)	1392 (26.2%)
Adoption	3684 (64.0%)	3273 (61.5%)	2677 (58.4%)	2724 (51.3%)
Relative Custody or Guardianship	331 (5.7%)	334 (6.3%)	439 (9.5%)	727 (13.7%)
APPLA	518 (9.0%)	490 (9.2%)	446 (9.7%)	466 (8.8%)
Total Recommendations Made	5754	5319	4585	5309

### Gender and Recommendations

FCRB members again reviewed more boys than girls (as expected since there are more boys in the general population of South Carolina and more boys in foster care). Proportionally, minimal differences in permanency plan recommendations were noted across gender. Boys were recommended for Adoption and Reunification at slightly higher rates than girls, while girls were recommended for APPLA and Relative Custody or Guardianship at slightly higher rates than boys.

Board Recommendation	Male	Female
Reunification	753 (26.6%)	639 (25.8%)
Adoption	1493 (52.8%)	1231 (49.6%)
Relative Custody or Guardianship	359 (12.7%)	368 (14.8%)
APPLA	224 (7.9%)	242 (9.8%)
<b>Total</b>	<b>2829</b>	<b>2480</b>

### Age and Recommendations

On average, children who received Reunification recommendations or Adoption recommendations tended to be younger than children who received other permanency recommendations. Because children must be at least 16 years old to be eligible for a permanency plan of APPLA, children recommended for APPLA were much older on average. Notably, children who received a recommendation of Relative Custody or Guardianship were about two years older on average than children who were recommended for Reunification or Adoption.

Board Recommendation	Average Age at Time of Review (SD)
Reunification	8.4 (5.3)
Adoption	8.2 (5.1)
Relative Custody or Guardianship	10.6 (5.3)
APPLA	17.2 (0.7)
<b>Total</b>	<b>9.4 (5.6)</b>

### Race and Recommendations

Considering recommendations across racial groups can reveal important differences in frequency and proportionality. In FY25, Hispanic children received APPLA recommendations at a disproportionately high frequency (a trend also noted in FY24). In FY24, this finding was not especially surprising since Hispanic children also had a significantly higher average age at time of review, therefore, a higher proportion of Hispanic children met the minimum age requirement for an APPLA recommendation. However, in FY25, American Indian or Alaska Native children had the highest average age at time of review, yet the rate of APPLA recommendations for children in this racial group was 11.8% (substantially lower than the 21.7% rate of APPLA recommendations for Hispanic children). The number of children in each racial group, average age, percent of children aged 16 and older, and percent of children in care 15 or more consecutive months may have been factors that contributed to differences in permanency recommendation rates across racial groups.

Board Recommendation	American Indian or Alaska Native	Asian	Black or African American	Hispanic or Latinx	Native Hawaiian or Other Pacific Islander	Two or More Races "Multi-racial"	White	Unknown or Not Reported
Reunification	5 (29.4%)	2 (15.4%)	581 (29.1%)	52 (29.7%)	6 (37.5%)	131 (22.4%)	596 (24.1%)	19 (65.5%)
Adoption	4 (23.5%)	11 (84.6%)	916 (45.8%)	66 (37.7%)	10 (62.5%)	334 (57.1%)	1377 (55.6%)	6 (20.7%)
Relative Custody or Guardianship	6 (35.3%)	0 (0.0%)	302 (15.1%)	19 (10.9%)	0 (0.0%)	78 (13.3%)	318 (12.8%)	4 (13.8%)
APPLA	2 (11.8%)	0 (0.0%)	200 (10.0%)	38 (21.7%)	0 (0.0%)	42 (7.2%)	184 (7.4%)	0 (0.0%)
<b>Total</b>	<b>17</b>	<b>13</b>	<b>1999</b>	<b>175</b>	<b>16</b>	<b>585</b>	<b>2475</b>	<b>29</b>



---

**FOSTER CARE REVIEW DIVISION**  
**BARRIERS TO PERMANENCY**

---

***BARRIERS TO PERMANENCY***

FCRB members and FCRD staff identify opportunities for improvement within the foster care system through Barriers to Permanency (BPs), a set of obstacles affecting progress toward permanency. All BPs are identified based on information provided to FCRD by DSS and obtained during reviews with interested parties. BPs are used to inform efforts to improve paths to permanent placements and identify areas within the foster care system as a whole that need improvement. This work was formerly done through the identification of Areas of Concern (AoCs); however, the AoCs were largely compliance driven and limited both in their ability to identify broader systemwide issues and their ability to identify root causes of permanency delays. During FY23, FCRD staff collaborated with DSS leadership to develop the BPs which are better suited to identifying systemic root causes impeding permanent placements and to help FCRB/FCRD more clearly articulate opportunities for advocacy and policy change necessary to expedite permanency. The BPs replaced AoCs on July 1, 2023, and the current iteration of the BPs was implemented in February 2024. CAMS database enhancements took longer to restructure, so the BPs were only partially built into CAMS during FY24, limiting FCRD staff's ability to fully document BPs in the database until September 2024. For this reason, the data available regarding BPs prior to that time is also limited. The CAMS build for BPs was completed during the first quarter of FY25, making BP documentation and data reporting possible.

***Categories***

The BP system nests individual Barriers to Permanency within three categories. Category 1 includes barriers related to reasonable efforts, Category 2 includes barriers related to placement and Category 3 includes barriers related to permanency. Category 1: Reasonable Efforts accounted for 58% of all BPs identified during FY25. This increase over FY24 was largely due to the increased documentation of missed family visitations.

BP Category	FY24 (Q3 & Q4)	FY25
Category 1: Reasonable Efforts	37.7%	58.0%
Category 2: Placement	19.5%	23.2%
Category 3: Permanency	42.8%	18.8%

***Requirements***

Category 1: Reasonable Efforts contains three requirements.

- Requirement 1: The status of each child shall be reviewed no less than once every 6 months.
- Requirement 2: The review shall determine whether the child should remain in foster care.
- Requirement 3: The review should determine compliance with the case plan.

Category 2: Placement contains three requirements.

- Requirement 1: DSS should have legal custody and authority to make placement decisions.
- Requirement 2: The child should have a case plan designed to achieve appropriate placement.
- Requirement 3: The child should be in an appropriate placement based on type of placement, proximity to parents, best interests, and special needs.

Category 3: Permanency contains two requirements.

- Requirement 1: Children in foster care will have timely court hearings and legal proceedings so as not to delay permanency.
- Requirement 2: DSS should make efforts to acquire a permanent home and plan for permanency for legally free children.

### Barriers, Barrier Types, and Causes

Within the Barriers to Permanency system, each Category is associated with a list of Requirements. Each Requirement has a list of Barriers. Each Barrier has Barrier Type(s), and Barrier Types have Cause(s) that seek to drill down to the root cause of permanency delays. In total, there are 25 Barriers. The top Barrier in FY25 was again Family Not Making Progress with Case Plan, which accounted for a fourth of all identified barriers (25.6%).

Category	Barrier	Percent of All Identified Barriers FY24 (Q3 & Q4)	Percent of All Identified Barriers FY25
Category 1: Reasonable Efforts	Family Not Making Progress with Case Plan	22.3%	25.6%
Category 1: Reasonable Efforts	Family Connections	2.6%	16.8%
Category 2: Placement	Best Interests	10.5%	10.5%
Category 2: Placement	Proximity to Family	3.0%	9.9%
Category 1: Reasonable Efforts	Family Engagement, Case Planning	5.1%	9.4%
Category 3: Permanency	Merits Hearing	10.7%	6.9%
Category 1: Reasonable Efforts	No Timely Administrative Review	2.8%	3.1%
Category 3: Permanency	Unable to Find an Adoptive Resource	3.6%	2.7%
Category 3: Permanency	Termination of Parental Rights (TPR) Hearing	6.9%	2.3%
Category 3: Permanency	Permanency Plan	5.1%	1.9%
Category 2: Placement	Type of Placement	3.6%	1.5%
Category 3: Permanency	Permanency Planning Hearing	4.9%	1.2%
Category 1: Reasonable Efforts	Not Necessary for Child to Remain in Care	4.5%	1.1%
Category 2: Placement	Special Needs	1.7%	1.1%
Category 1: Reasonable Efforts	Needed Services Not Provided	0.2%	1.0%
Category 1: Reasonable Efforts	Court Order	0.2%	1.0%
Category 3: Permanency	Adoption Referral	5.4%	0.8%
Category 3: Permanency	Child Specific Recruitment Efforts	1.9%	0.8%
Category 3: Permanency	APPLA is the Permanent Plan and Chafee Services Have Not Been Assessed for or Utilized Adequately	2.4%	0.8%
Category 3: Permanency	Legally Free But Not on Active Recruitment	0.0%	0.6%
Category 3: Permanency	Other Legal Concerns	0.9%	0.3%
Category 3: Permanency	Adoption Services Referral Not Accepted	1.1%	0.3%
Category 2: Placement	Case Plan Not Designed to Achieve Appropriate Placement	0.6%	0.3%
Category 3: Permanency	Probable Cause Hearing	0.0%	0.2%
Category 2: Placement	Legal Authority/Custody	0.0%	0.0%

The Barrier Types indicate that the primary issue behind the Family Not Making Progress with Case Plan delay was that the parent(s) or other case defendant(s) chose not to be compliant with the court ordered case plan (meaning no other external barrier prevented compliance). Additional detail regarding BPs is available in the appendices.

Barrier: Family Not Making Progress with Case Plan	FY24 (Quarter 3 and Quarter 4)	FY25
Barrier Type: Choosing Not to Make Progress with Case Plan	75.0%	86.2%
Barrier Type: Unable to Access Services	2.9%	13.3%
Barrier Type: Unidentified (Other External Barrier)	22.1%	0.5%



## FOSTER CARE REVIEW DIVISION

### REVIEW TIMELINESS

#### REVIEWS NOT TIMELY

The FCRB aims to hold an initial review meeting for every child within four to six months of their foster care entry date. Review meetings are scheduled for children every six months thereafter. Occasionally, review meetings do not occur as scheduled, and this is referred to as canceled or continued reviews. During FY25, 153 case review meetings involving 247 children were canceled due to scheduling issues, most frequently because the child(ren) exited foster care prior to the review date but after the review day agenda had already been finalized. There were 601 instances of continued case review meetings involving 954 children (children are duplicated if the child experienced multiple continuances during the fiscal year). This 15.1% continuance rate in FY25 is a decrease from the FY24 continuance rate, demonstrating continued improvement in this measure.

#### Reasons for Continuance

The most frequent reason for review continuance was non-receipt of an advance review packet from the child's foster care case manager, which accounted for 69.7% of continued reviews. FCRD coordinators are unable to adequately prepare for a review without the information contained in the required advance review packet. To help address this issue, the division is partnering with DSS on an initiative that will allow the FCRD database to interface directly with the DSS child welfare database, sharing both information and documents, with the end goal of automating much of the advance review packets. The work for this database integration is underway and the first stage of implementation was expected to occur in FY25. Technological delays pushed implementation of this project back to FY26. The second most frequent reason for continuance was DSS Staff Not Present (10.0%) followed by Required Party Not Invited (8.0%). Seven review meetings were continued when the review board did not have enough members present to meet quorum. Further information about review cancelations and continuances in FY25 is available in the appendices.

Reason for Continued Review	Case Review Meetings
No Advance Review Packet Received	419 (69.7%)
DSS Staff Not Present	60 (10.0%)
Required Party Not Invited	48 (8.0%)
Inclement Weather or Other Emergency	25 (4.2%)
Parent's Guardian <i>ad Litem</i> Not Invited	15 (2.5%)
Lack of Pertinent Information	9 (1.5%)
Review Board Did Not Meet Quorum	7 (1.2%)
Required Party Not in Attendance	4 (0.7%)
Key Party Requested Continuance	2 (0.3%)
DSS Not Prepared to Present Information	2 (0.3%)
Parties Attended Court	1 (0.2%)
Other Reason	9 (1.5%)
<b>Total</b>	<b>601</b>

#### Canceled Reviews

In FY25, 153 case review meetings involving 247 children were canceled due to scheduling issues (mostly related to children exiting foster care prior to the scheduled review date but after the review day agenda had been finalized). The virtual review format allowed several reviews to be held despite hazardous weather conditions, so only two cancelations occurred due to hazardous weather.

Review Status	Case Review Meetings	Children Impacted
Completed Reviews	3221	5309
Continued Reviews	601	954
Canceled Reviews	153	247
<b>Total</b>	<b>3975</b>	<b>6510</b>

---

## FOSTER CARE REVIEW DIVISION

# SOUTH CAROLINA HEART GALLERY

---

Since July 2005, the South Carolina Heart Gallery (SCHG) has worked to find forever families for children in foster care who are legally free and awaiting adoption. To fulfill its mission, SCHG, led by Program Coordinator Christina Grant, recruits photographers who volunteer to take photos of the children at scenic locations around the state. Since FY23, SCHG has partnered with Grant Me Hope, a nonprofit organization that creates videos of children who are legally free for adoption. These videos provide even stronger connections with prospective families. Staff share the photos and videos on the SCHG's website and social media accounts, partner with media outlets for broadcast, and work with public and nonprofit organizations to host exhibits of the framed portraits. SCHG is part of the FCRD, through a contract with the Department of Social Services. The public can view the online gallery at <https://scheartgallery.sc.gov/>.

### *Gallery Photo and Video Sessions*

In FY25, SCHG continued to grow in reach, creativity, and impact. Through photo and video shoots and personalized private sessions when needed, SCHG captured the unique stories of children in foster care, making their personalities visible to families exploring adoption. The team also participated in major community events, strengthening public awareness and deepening relationships with families, professionals, and media partners. A continued partnership with Grant Me Hope marked a strategic milestone, ensuring continued production of high-quality videos that complement SCHG's mission. This year's progress reflects the power of collaboration, compassion, and commitment to helping every child find a loving, permanent home. Throughout the fiscal year, SCHG facilitated 13 regional photo and video sessions across the state. These sessions provided opportunities to capture the unique personalities of children in foster care, helping prospective families connect with their stories. In addition to these group sessions, SCHG conducted six private photo sessions, offering individualized accommodations for children who benefit from quieter, more personalized settings. Each session contributed to the growing gallery of portraits and videos that serve as powerful tools in the search for forever families.



Christina Grant, SCHG Program Coordinator (top left), Skylar Ackerson, SCHG Intern (top right), and Kaylynn Knight, SCGH Program Assistant (bottom left) pose with HOPE sculpture; image to the right shows a SCHG Community Exhibit featuring photos and stories of waiting children.



SCHG Program Coordinator Christina Grant was featured on Lowcountry Live to raise awareness about SC children awaiting adoption.



Attorney Trey Harrell (left), SCHG Program Coordinator Christina Grant (center), and FCRD Director Lindsey Taylor (right).

### ***Community Engagement and Events***

SCHG remained active in the community, participating in seven major outreach events designed to raise awareness and foster connections. These included conferences such as Flourishing Families, Building Hope for Children, and the Children's Trust Conference, where SCHG engaged with professionals and families alike. The team also appeared on Lowcountry Live, expanding public visibility through broadcast media. Family-friendly events like DSS' Trunk-or-Treat at its state and Richland County offices, as well as the Touch-a-Truck exhibit at Columbiana Centre, offered direct engagement with children, caregivers, and potential adoptive families. These efforts reinforced SCHG's presence as a trusted and compassionate advocate for children awaiting adoption.

In a touching milestone for the SCHG, the team produced its first-ever adoption success video in collaboration with Grant Me Hope. This video highlighted the journey of one of SCHG's featured children whose story led to a forever family. SCHG was honored to attend the child's adoption hearing, witnessing the joyful moment when hope became home. To commemorate the occasion, the team presented the child and her adoptive family with her original Heart Gallery exhibit photo, a symbol of where her journey began, along with a few thoughtful SCHG-branded items to celebrate their new beginning.



Volunteer board members participated in a SCHG group photo shoot in the Upstate.



SCHG Program Assistant Kaylynn Knight at the SCSS Trunk-or-Treat event in October 2024.

## Partnerships

SCHG continued its partnerships with news stations in the state and the Columbiana Centre shopping mall. In a significant milestone, SCHG formalized its collaboration long-term with Grant Me Hope by signing a five-year Memorandum of Understanding. This partnership ensures continued production of high-quality videos that deepen emotional resonance and storytelling for children featured in the gallery.

From one year to the next, the SCHG continues to grow, not just in numbers, but in heart. In FY24, SCHG participated in four community events and held nine group photo sessions along with two porch shoots. In FY25, SCHG expanded their reach with seven major events, thirteen photo sessions, and six private sessions, serving more children with both visibility and care. Online engagement also grew, with 961 inquiries from prospective families, an increase from 851 the year before. Each of these numbers represents a moment of connection, a spark of hope, and a step closer to a forever family. With the support of DSS, community partners, volunteers, and media allies, SCHG continues to grow in reach and effectiveness, bringing hope and healing to children who are waiting for a place to call home. It is a testament to all that is possible when compassion, creativity, and collaboration come together for the sake of our children.



Doretta Crosson-Irby, Stephanie Spink, Lindsey Taylor, Shallia Belton, Coretta Bush-Etheredge, and Christina Grant of the FCRD attended the annual Children's Trust conference.



Left to right, Kaylynn Knight, SCHG Program Assistant, Christina Grant, SCHG Program Coordinator, Dawn Barton, SCDSS, and Skylar Ackerson, SCHG Intern.



Heart  
Gallery  
South Carolina

---

## FOSTER CARE REVIEW DIVISION

### COMMUNITY CONTRIBUTIONS

---

#### *Board Contributions*

The State Board of Directors for Foster Care Review Board encourages each of the 43 local review boards to develop an annual Community Contribution Plan (CCP) to guide the volunteer board members' advocacy activities throughout the year. The CCP activities are chosen by the board members, often in collaboration with representatives from DSS, and designed to benefit children involved in the foster care system throughout South Carolina. Board members are asked to plan their community contributions in the categories of service projects, legal advocacy, partnerships and collaboration, Child Abuse Prevention Month events, and South Carolina Heart Gallery events.

During FY25, board members contributed a combined 1254 volunteer hours on top of the estimated 3280 hours spent in review meetings, and 971 hours in agency led trainings. Many board members participated in events across the state during Child Abuse Prevention Month (April) and Foster Care Month (May) to help raise awareness. Board members met with family court judges, legislators, DSS leadership, guardians *ad litem*, and other partners throughout the year in an effort to strengthen partnerships, engage in legal advocacy, and enhance collaboration. A number of boards made donations to the South Carolina Heart Gallery so that children would have snacks or meals during photo sessions. Other boards participated in service projects to meet specific needs identified in the counties served by their board. Members of Board 10A in Oconee County provided \$8500 in gift cards to DSS to use to meet the needs of children in care and Board 09D in Charleston County arranged for children in foster care to receive free haircuts for the beginning of the school year.



Board 10A members (left to right) Linda Holt, Greg Bearden, Cortni Nations, and Sandra Pruitt.

---

## FOSTER CARE REVIEW DIVISION

# 50 YEAR ANNIVERSARY EVENT

---

### *50th Anniversary*

On July 11, 2024, the Foster Care Review Board and Foster Care Review Division celebrated 50 years of advocacy. The anniversary was recognized at the State House with a special ceremony during which Governor Henry McMaster applauded the board's accomplishments and proclaimed July 8 through July 12 as Foster Care Review Week in South Carolina. State Child Advocate Amanda Whittle, FCRD Director Lindsey Taylor, and Chair of FCRB's State Board of Directors Andrea McCoy also spoke of the board's history, accomplishments, and vision for the future. In her message to the crowd Director Taylor said, "Fifty years of service is remarkable, but, to me, just as exciting, is the prospect of the next 50 years...We are faced with an opportunity to continue the great work that has been ongoing for five decades while also growing our impact through enhancing our knowledge and understanding of how to get the best outcomes for children and families; increasing accessibility thanks to technology avenues that weren't previously available; and building a robust partnership with DSS to support changes that they have very thoughtfully and intentionally made to strengthen the families that they serve. All of this adds up to an improved foster care system and better outcomes for children, which is why we're all here."

Following the ceremony, a reception was held to honor current and former volunteer board members and special recognition was offered to several board members for their extraordinary service. John Seignious III was recognized as the longest serving board member (31 years); Margie Mijares was recognized as the longest continually serving board member (29 years); Barbara Acobe was recognized for 28 years of service; and Deirdre "Dee" Stogdill was recognized as the Review Board Member of the Year.



Governor Henry McMaster, State Child Advocate Amanda Whittle, and FCRD Director Lindsey Taylor with several members of the State Board of Directors and local review board volunteers.

---

**FOSTER CARE REVIEW DIVISION**  
**STATE BOARD**

---

The FCRB includes a seven-member volunteer State Board of Directors (BOD), appointed by the governor and confirmed by the state Senate, tasked with making a set of annual recommendations regarding system improvement. By coordinating review meetings throughout the year, collaborating with other child-serving agencies across the state, and collecting and analyzing relevant data, FCRD assists the BOD to understand, in detail, how the statewide foster care system is functioning and can be improved. Currently, the BOD has two vacancies.



**Andrea McCoy**  
*State Chair*  
*6th Congressional District*

Andrea McCoy holds a bachelor's degree from the University of South Carolina and a certificate in nonprofit management from Winthrop University. She is a life-long South Carolinian who was born and raised in Florence and moved to Columbia for college where she met her husband, Stephfon. Andrea has been a member of the Foster Care Review Board since 2015, and FY25 marked her 8th year serving as a state board member. She is a program manager with a global pharmaceutical company, a certified Project Management Professional (PMP), and owner of Innovative Solutions, LLC. In addition to the Foster Care Review Board, Andrea serves as chairperson for the Midlands Technical College Office Systems Advisory Board, as a member of the Human Rights Committee of Sevita (formerly S.C. Mentor), and sits on the Executive Board of Trustees of Bible Way Church of Atlas Road. Andrea has repeatedly been recognized for her community service with awards and accolades. However, she is most proud of serving as a project manager for S.C. Dental Access Days, where more than 1,500 patients received over \$500,000 worth of dental care in two days, and managing the We Are The Village project, resulting in Christmas gifts for over 400 kinship care and homeless families in the Midlands area. She enjoys gardening, traveling, solving puzzles and visiting museums. Andrea and Stephfon are the proud parents of daughter, Dr. Alexis McCoy-Pickett, and son-in-law, Derrick Pickett. Andrea is a loving GiGi to her grandson, Theodore.



**Mary D. Long**  
*5th Congressional District*

Mary Long earned a bachelor's in social work from Meredith College. She was born in Columbia and lived in several other states before returning to the south to attend college. Mary worked for DSS as a child protective services worker in Virginia and South Carolina for 14 years. After retiring early to care for her special needs son, Mary joined FCRB in 2010. Her local board (5E) was FCRB of the year in 2012 and Mary was FCRB volunteer of the year in 2020. Mary joined the State Board in 2022. Mary is also a board member for the Family Resource Center (local Child Advocacy Center) in Kershaw County and was volunteer of the year in 2013. Mary is an active member of Trinity Methodist Church. She served as a volunteer for 15 years at Second Look Charities (non-profit thrift store which awards grants to local programs in need) in Camden before becoming the assistant manager in 2022. Mary has been married to Joel Long for 35 years. She has two sons, Doug and John, and a new daughter-in-law, Storey. Doug is a nurse and currently in school at UAB to become a nurse anesthetist. John attends the day program at the local DDSN center and works at the local recycling center.

---

**FOSTER CARE REVIEW DIVISION  
STATE BOARD**

---



**George Jones**  
*3rd Congressional District*

George Jones, Jr. was born and raised in Saluda, SC. After graduating from Saluda High School, he enlisted in the United States Army. He retired from the military after serving 23 years, holding the rank of Sergeant First Class. George has resided in Greenwood County for over 50 years. After retirement he became employed with Lander University where he served as a CDL trainer and bus driver for the athletic department. He is very active in his community and the surrounding areas. Before becoming a board member for the FCRB, he was a foster parent for eight years to many children and also became an adoptive parent. George is very compassionate and dedicated to volunteer work. From 2001-2016 he served as the vice chair for the Greenwood County Library Board of Trustees. In 2014, he became the volunteer driver for the Safe Haven After School Program with the Community Initiative Center in Greenwood. George is the chairman of economic development within the Greenwood chapter of the NAACP. He has been an active FCRB member for the past 28 years and was appointed to State Board in 2022. He has also volunteered at the Greenwood county solicitor's office with the Pre-Trial Intervention (PTI) Arbitrator Division since 2011. George was given the "Father of the Year" Award in 2009 by the Tom Joyner Morning Show. He attends church services and is an avid supporter of Connie Maxwell Baptist Church which is located on the campus of Connie Maxwell Children's Ministries. He raised four girls (Angela, Zena, Shonda, and Sakari) and one son (George) in Greenwood County.



**Jane W. Daniel**  
*4th Congressional District*

Jane Daniel earned her Bachelor's and Master's in education from Georgia State University and she is a Certified Victim Assistance Specialist. Jane was born in Atlanta, Georgia, where she taught for seven years before moving to Taylors, then Greer, SC, when her husband took a job with Michelin North America. They have resided in the Upstate for over 45 years. Jane taught in Greer for one more year before going into the nonprofit field, where she worked for 29 years, retiring in 2017. Her jobs have included: Director of Volunteer Services for the Shelter for Battered Women; Director of the Family Violence Intervention Program for Compass of Carolina; Development and Fundraising Director for the Phoenix Center (the Alcohol & Drug Abuse agency in the Upstate); Director of Donor Relations and Major Gifts for Harvest Hope Food Bank; Director of Legislative Affairs for Donate Life South Carolina; and Executive Director of the S.C. Hospice & Palliative Care Foundation. She has served her state by volunteering on numerous local and state boards and commissions. She is blessed to have been married for 49 years to her wonderful husband, John. Her service on the local FCRB in the Upstate has lasted over 30 years, and she is currently representing the 4th Congressional District on the FCRB State Board for the second time. She was a founding member of The Heart Gallery Foundation Board of Directors. Jane and John have two children. Their daughter, Beth, currently resides in Roswell, GA. Their son, Scott, is the Senior Pastor at Cornerstone Baptist Church in Winston-Salem, NC. They are blessed to have nine amazing grandchildren. They attend First Presbyterian Church in downtown Greenville.

---

FOSTER CARE REVIEW DIVISION  
STATE BOARD

---



***John F. Seignious III***  
*1st Congressional District*

John Seignious III joined the State Board during FY24. John was initially appointed to serve as a volunteer board member in 1983, and he continues to serve on Board 09A for Charleston County children. He was recognized as the Foster Care Review Board Member of the Year in 2016. In addition to serving on Board 09A, John filled in as substitute on 10 other boards for an additional 44 review days during FY25, conducting 350 case review meetings that served children across the state. While volunteer board members typically serve on reviews one day per month, John served on reviews an average of four days per month during FY25. John currently resides in Mt. Pleasant, SC, with his wife whom he has known since the first grade. Together they have two children (John IV "Jeff" and Lisa), two grandchildren (Haylee and Tanner), and one great-grandchild (Hadley). John is a member of the ELKS Lodge, the German Friendly Society, the Ancient Order of Hibernian, the Fort Sumter Camp Sons of the Confederacy, Marion Marauders Society, and formerly a member of the SC Irish Society and Quis-Qui of Charleston. His hobbies include fishing, hunting, scuba diving, traveling, socializing, and piloting airplanes. His favorite quote is, "To thine own self be true".



---

FOSTER CARE REVIEW DIVISION  
STATE BOARD  
RECOMMENDATIONS

---

FOSTER CARE REVIEW DIVISION

STATE BOARD OF  
DIRECTORS  
RECOMMENDATIONS

The State Board of Directors' (BOD) FY25 recommendations, informed by the efforts of FCRD across the year, are intended as general suggestions to aid the statewide foster care system.

Recommendations are made in the areas of Intentionally Partnering for Permanency, Engagement and Advocacy, Legal Advocacy, and Internal Capacity. In prior years, the BOD also provided recommendations regarding the accessibility of Foster Care Review Board meetings; however, a series of program changes since 2020 has effectively resolved most accessibility issues, eliminating the need for ongoing improvement recommendations in this area.

The BOD's recommendations may also help non-experts interested in the foster care system understand major barriers to ensuring children have safe, permanent homes.

***Intentionally Partnering for Permanency***

The Board of Directors recognizes that continued progress has been made on rebuilding relationships with child welfare partners across the state and increasing the visibility of Foster Care Review Board, but work remains. As with the previous year's recommendations, the BOD again recommends that the division and local boards continue their efforts to strengthen existing partnerships and develop new ones to maximize opportunities for collaboration that will positively impact permanency outcomes for children and families involved in South Carolina's foster care system. This includes being deliberate about ensuring local boards have an active Community Contribution Plan in place and actively work to identify needs within their community to support the children and families along with the child welfare professionals who serve them.

The BOD believes that local board members should serve as active participants on the DSS-led Child Welfare Improvement Teams in each county across the state, increasing opportunities for input and advocacy as well as opportunities for interaction and engagement with multiple stakeholders and partners serving in the child welfare system. The BOD recommends that board members continue to volunteer and serve alongside South Carolina Heart Gallery (SCHG) team members on photography days and work with the SCHG to enhance collaboration with community partners and increase the number of SCHG community photo exhibits. Additionally, the BOD recommends continued collaboration with the South Carolina General Assembly on laws that support the well-being of children and families in our state.

***Engagement and Advocacy***

The BOD continues to place emphasis on the value of making recommendations based on input from all parties involved in the lives of children in foster care. The Board recommends ongoing efforts to engage with and encourage the participation of biological parents, DSS team members, guardians *ad litem*, foster parents, kinship caregivers, and service providers in the review process. The BOD has several recommendations regarding advocacy from local boards (continued from fiscal years 2023 and 2024):

---

**FOSTER CARE REVIEW DIVISION**  
**STATE BOARD**  
**RECOMMENDATIONS**

---

***Engagement and Advocacy (continued)***

- BOD recommends that local boards continue to engage with parties in a respectful, empathetic way during reviews and identify opportunities for advocacy from the information provided.
- BOD recommends continued efforts toward increasing FCRB presence at court hearings to advocate for children and families to attain permanency as soon as possible.
- BOD recommends that local boards actively engage with their local family court system to identify areas where advocacy is needed and ensure that their judicial circuit has the optimal number of family court judges and dedicated court time to efficiently support our state's foster care caseload.
- BOD recommends that annual advocacy goals, informed by review data, are developed to guide system-level efforts and to highlight areas where local boards can make the greatest impact. Additionally, Barriers to Permanency (BP) data should be utilized to identify advocacy opportunities targeting improvement in the areas of sibling connections, family visitation, and foster parent recruitment and retention. The BOD recognizes that BPs related to sibling connections were identified in 10% of the 5,309 child reviews that occurred in FY25; BPs related to a lack of visitation with parents were identified in 15% of the child reviews; and BPs related to a lack of available placement or a child's needs not being adequately met in their placement were identified in 19% of the child reviews. The BOD feels that it is imperative for South Carolina's child welfare system to assess



---

**FOSTER CARE REVIEW DIVISION**  
STATE BOARD  
RECOMMENDATIONS

---

policies, statutes, and practices that ensure the prioritization of maintaining sibling connections for children in foster care; ensure that visitation with parents occurs frequently enough to preserve and strengthen connections; ensure that each child has access to placement that effectively meets the child's needs, including the need for preserving connections.

- BOD recommends development of an interest form to identify board members who have interest in serving on an advocacy sub-committee that may be established during FY26.

***Legal Advocacy***

The BOD is aware that court delays and legal barriers can often have an impact on children in foster care achieving timely permanency. They continue to recommend that the FCRD increase collaboration with the Court Improvement Program to review data and identify opportunities for families, external partners, and board members to advocate for improvements to the family court system in addition to case specific legal advocacy and court involvement by the board. This collaboration includes monitoring legal processes and making recommendations for removing barriers to timely decisions that are identified as impacting timely permanency for children in foster care. The BOD recommends the utilization of BP data to help target opportunities for legal advocacy. Additionally, the BOD supports the division's efforts to update the FCRB regulations which have not been updated in more than 20 years. During FY25, the division worked to complete a draft of the updated regulations and presented the proposed update to the BOD and the Bench Bar. The BOD stands ready to assist as needed in the next steps of presenting the updates to local board members and external stakeholders during the first quarter of FY26 to obtain feedback and stay on track to publish the updated regulations by November 2025 so that it may be included in the state register for the next legislative session.

***Internal Capacity***

The BOD continues to recognize the need for strengthened capacity within its boards and maintains the recommendation from previous years regarding enhanced training for FCRB members and chairpersons, board member attendance at reviews and provided training, reduced board vacancies, and more frequent communication among FCRD staff, review board members, and BOD members. The BOD continues to note significant progress on this goal through the onboarding of a training and volunteer coordinator within the division who is dedicated to achieving these tasks. The BOD recommends that ongoing efforts be made to offer frequent Lunch and Learn training sessions and other internal training opportunities, to strengthen the online training library, and to promote the library for increased use by board members.

---

**FOSTER CARE REVIEW DIVISION**  
**VOLUNTEER**  
**BOARD MEMBERS**

---

***Board Members Serving in Fiscal Year 2025***

Dietrich Shuler, 01A	Quadrey Reeves, 05D	Greg Bearden, 10A	Sethra Little, 13D
Eartha Fuller, 01A	Thewanda Cooper, 05D	Linda Holt, 10A	Bonita Holland, 13E
Betty Profit, 01B	Kimberly Keys, 05E	Sandra Pruitt, 10A	Glenn Farrow, 13E
Christopher Hollowell, 01B	Laurie Parks, 05E	Jean Ashworth, 10B	Lethea Parker, 13E
Joyce Davis, 01B	Mary Long, 05E	Laura Rhodes, 10B	Britton Swingle, 13F
Nicole Bethune, 01B	Gwendolyn Thompson, 06A	Sherill Brock, 10B	Elizabeth Nichols, 13F
Tammy LeGates, 01B	Sheresa Ingram, 06A	William Travis Estes, 10B	Erin Predmore, 13F
Brenda Owen, 02A	Anita Mack, 07A	Christy Coffee, 10C	Lauren Scoggins, 13F
Cheryl Long, 02A	Beth Young, 07A	Cletus Bartsch, 10C	Syntha Lee, 13F
Heather Still, 02A	Burnnie Holliday, 07A	Jill McDonald, 10C	Cyndi Roberts, 14A
James Kelly, 02A	Nancy Dunn, 07A	Kathryn Cleveland, 10C	Elijah Battle, 14A
Barbara Morgan, 02B	Ann Fuller, 07B	Kimberly Wilson, 10C	Kelly Ramsey, 14A
Henry Bolen, 02B	Frances Littlejohn, 07B	Sherry Hodges, 10C	Paula Bishop, 14A
Paul McElmurray, 02B	Janet Moss, 07B	Joyce Robbins, 11A	Richardine Fernandez, 14A
Elizabeth Briley, 03A	Tina Skinner, 07B	Margie Mijares, 11A	Whitney Lutz, 14A
Joye Hilton, 03A	Bonnie Gramling, 07C	Chris Hoffmann, 11B	Barbara Solley, 14B
McKayla Shaw, 03A	Jennie Sullens, 07C	Deirdre Stogdill, 11B	Cindy Graves, 14B
Patricia Terry, 03A	Lorna Burrell, 07C	Desiree Council, 11B	Jennifer Hayes, 14B
Raleigh King, 03A	Sandra Stanley, 07C	Kathleen Bishop, 11B	Melissa Martin, 14B
Sheryl Davis, 03A	Glenda Brady, 07D	Brenda McKithen, 12A	Barbara Dempsey, 15A
Betty Elmore, 03B	Heather Witt, 07D	Connie Taylor, 12A	Linda Leibert, 15A
Cheryl Schmeling, 03B	Jordana Megonigal, 07D	Linda Williams, 12A	Rebecca Fico, 15A
Richard Rasmussen, 03B	Anita Smith, 08A	Samuel McKenzie, 12A	Terri Triana, 15A
Carolyn Lide, 04A	George Jones Jr., 08A	Syville Goodson, 12A	Felicia Miles, 15B
Carolyn Wallace, 04A	Georgia Thomas, 08A	Jean Pearson, 12B	Helen Bowden, 15B
Stephen Laird, 04A	Deborah Kinard, 08B	Sylvia Rogers, 12B	Janet Thompson, 15B
Betty Hurst, 04B	Carrie Grady, 09A	Caitlan Reid, 13B	Juliet Casper, 15B
Diane Hines, 04B	John Seignious III, 09A	Garey Collins, 13B	Norma Browder, 15B
Lucy Brown, 04B	Fouchena Sheppard, 09C	Harry "Jack" McCall, 13B	Candy Woods, 15C
Mary Boyd, 05A	Jessica Doherty, 09C	Heather Purtle, 13B	Christine Schwenke, 15C
Sheryl Dunning, 05A	Valerie Askins, 09C	Ralphetta Bailey, 13B	Kathleen Hamilton, 15C
Brenda Williams, 05B	Barbara Acobe, 09D	Bryan Kirby, 13C	Patricia Troutman, 15C
Eva Prioleau, 05B	Doris Mines, 09D	Daniel Moore, 13C	Sheryl Williams, 15C
Veronica Reynolds, 05B	Cynthia Curry, 09E	Jane Daniel, 13C	Catherine Hardin, 16A
Andrea Williams, 05C	David Fitzpatrick, 09E	Joy Jones, 13C	Dawn Crump, 16A
Dierdre Holland, 05C	Gene Coon, 09E	Tanya Camunas, 13C	Mary Evans, 16B
Markeis Allen, 05C	Kathleen Bounds, 09E	Linda Young, 13D	Seanta Clark, 16B
Raquel Thomas, 05C	Tami Gordon, 09E	Patricia Massullo, 13D	
Andrea McCoy, 05D	William Schupp, 09E	Sarah Wood, 13D	
James Woodley, 05D	Cortni Nations, 10A	Scott Geer, 13D	

At the start of FY25, FCRB had 73 board vacancies across the state, and this number increased to 82 by the end of the fiscal year. Citizens interested in joining a local board can find detailed information regarding the appointment process on the Foster Care Review Division's website. <https://fcrd.sc.gov/volunteer/prospective>

If the information in this report is used in future publications, please use the following citation information:

South Carolina Foster Care Review Division. (2026). *South Carolina Division of Foster Care Review Fiscal Year 2025 Annual Report*. South Carolina Department of Children's Advocacy. Columbia, SC: University of South Carolina Press. [https://fcrd.sc.gov/sites/fcrb/files/Documents/annual\\_report/FCRB\\_2025\\_Annual\\_Report.pdf](https://fcrd.sc.gov/sites/fcrb/files/Documents/annual_report/FCRB_2025_Annual_Report.pdf)

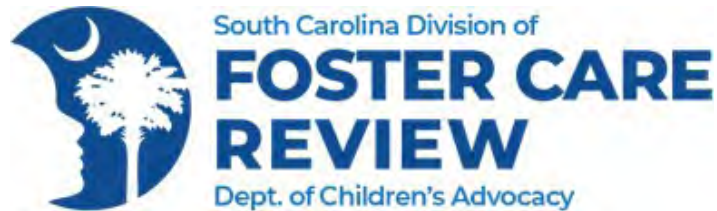


SOUTH CAROLINA DEPARTMENT OF CHILDREN'S ADVOCACY  
DIVISION OF FOSTER CARE REVIEW  
1205 PENDLETON ST. SUITE 436  
COLUMBIA, SC 29201  
803-734-0480 FCRD.SC.GOV

This report was prepared by the South Carolina Department of Children's Advocacy. For additional information, please email [communications@childadvocate.sc.gov](mailto:communications@childadvocate.sc.gov) or call (803) 734-3176. The cost of printing 150 copies was \$10.16 per copy, totaling \$1523.40.

**DIVISION OF  
FOSTER CARE REVIEW  
FY25 ANNUAL REPORT**

**APPENDICES**





2+2=?

5:5=?

5-3=?

2x0=?

-2=?

???

?

?

?

?

---

## FOSTER CARE REVIEW DIVISION TABLE OF CONTENTS: APPENDICES

---

### INDIVIDUAL CHILDREN REVIEWED

Count of Children Reviewed	IV
Age, Race and Gender of Children Reviewed	V

### BOARD RECOMMENDATIONS

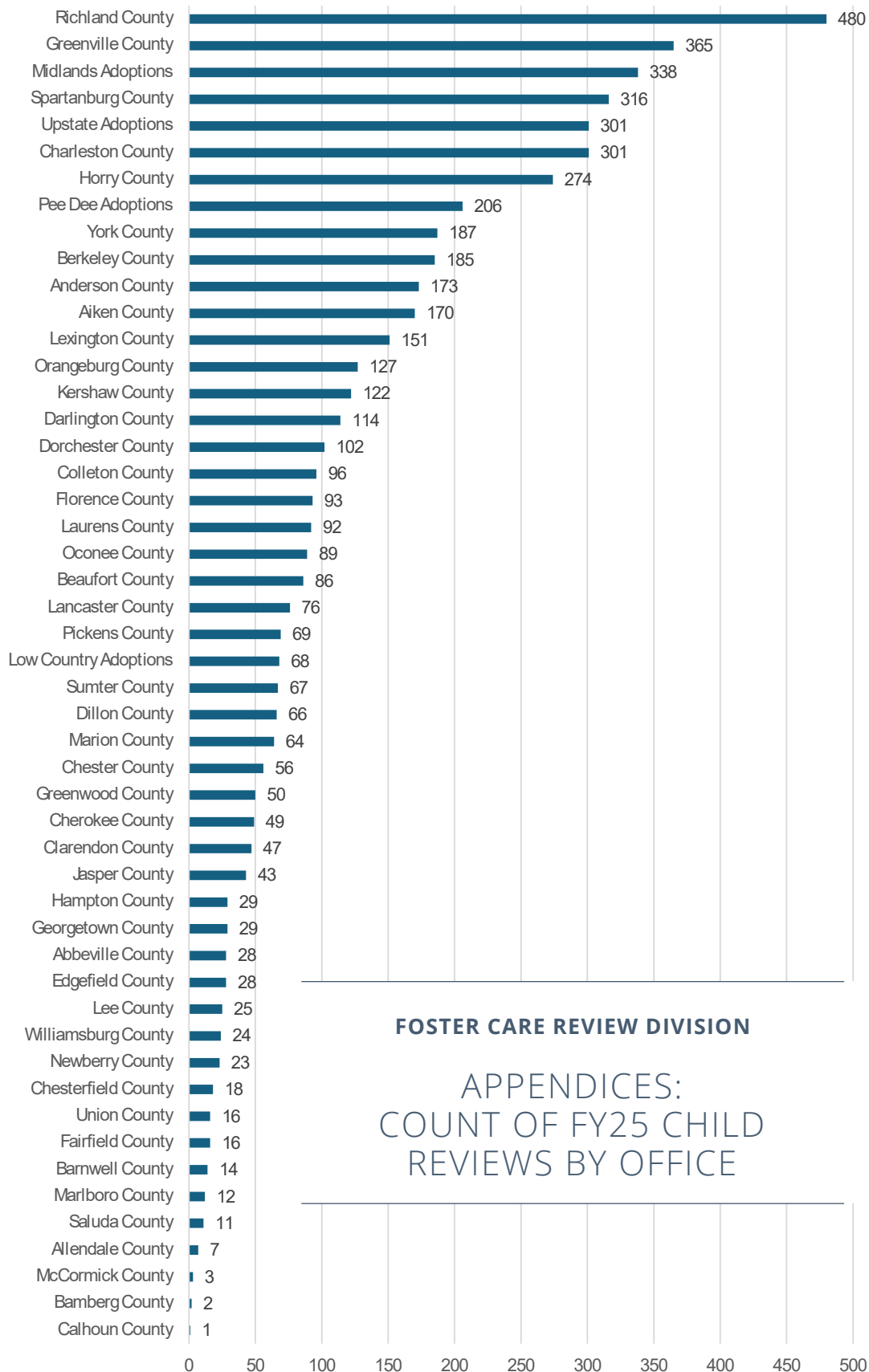
Recommendations by Race and Gender	VI
Race and Gender on Reunification Recommendations	VI
Race and Gender on Adoption Recommendations	VI
Map of Boards	VII

### REVIEW OUTCOMES

Child Review Outcomes by DSS Office	VIII
-------------------------------------	------

### BARRIERS TO PERMANENCY

Barrier Count	X
List of Barriers to Permanency Category 1	XI
List of Barriers to Permanency Category 2	XIV
List of Barriers to Permanency Category 3	XVI
Barriers to Permanency Category 1 Details	XIX
Barriers to Permanency Category 2 Details	XXVII
Barriers to Permanency Category 3 Details	XXXII



**FOSTER CARE REVIEW DIVISION**

APPENDICES:  
CHILDREN REVIEWED:  
AGE, RACE AND GENDER

**Age of Child at Time of Most Recent Review**

Age Category	Count	Percent
Under 1 Year	158	4.4%
1 Year	262	7.4%
2 Years	250	7.0%
3 Years	199	5.6%
4 Years	180	5.1%
5 Years	177	5.0%
6 Years	157	4.4%
7 Years	163	4.6%
8 Years	161	4.5%
9 Years	172	4.8%
10 Years	158	4.4%
11 Years	140	3.9%
12 Years	151	4.2%
13 Years	203	5.7%
14 Years	190	5.3%
15 Years	233	6.5%
16 Years	257	7.2%
17 Years	345	9.7%
18 Years	2	0.1%
<b>Total Children Reviewed</b>	<b>3558</b>	<b>100%</b>

**Age Group of Child at Time of Most Recent Review**

Age Category	Count	Percent
< 5 Years	1049	29.5%
5 to 10 Years	830	23.3%
10 to 15 Years	842	23.7%
15 to 18 Years	837	23.5%
<b>Total Children Reviewed</b>	<b>3558</b>	<b>100%</b>

**Race and Gender of Children Reviewed**

Racial Identification	Male	Female
American Indian or Alaska Native	6 (0.3%)	6 (0.4%)
Asian	5 (0.3%)	4 (0.2%)
Black or African American	702 (37.3%)	669 (39.9%)
Hispanic or Latinx	52 (2.8%)	73 (4.4%)
Native Hawaiian or Other Pacific Islander	5 (0.3%)	4 (0.2%)
Two or More Races "Multi-Racial"	215 (11.4%)	165 (9.8%)
White	880 (46.8%)	749 (44.6%)
Unknown or Not Reported	15 (0.8%)	8 (0.5%)
<b>Total Children Reviewed</b>	<b>1880</b>	<b>1678</b>

**Race and Gender on Average Age at Time of Most Recent Review**

Racial Identification	Average Age Male (SD)	Average Age Female (SD)
American Indian or Alaska Native	11.3 (4.3)	13.5 (2.6)
Asian	9.0 (6.2)	6.6 (5.3)
Black or African American	9.3 (5.6)	10.0 (5.6)
Hispanic or Latinx	12.3 (5.2)	11.7 (5.8)
Native Hawaiian or Other Pacific Islander	8.5 (3.5)	11.5 (3.9)
Two or More Races "Multi-Racial"	9.0 (5.8)	8.6 (5.6)
White	8.8 (5.5)	9.6 (5.6)
Unknown or Not Reported	5.0 (3.9)	7.3 (6.0)
<b>Total Children Reviewed</b>	<b>9.1 (5.6)</b>	<b>9.8 (5.6)</b>

**FOSTER CARE REVIEW DIVISION**

APPENDICES:  
BOARD RECOMMENDATIONS:  
RACE AND GENDER

**Permanency Recommendations Across Race**

Board Recommendation	American Indian or Alaska Native	Asian	Black or African American	Hispanic or Latinx	Native Hawaiian or Other Pacific Islander	Two or More Races "Multi-racial"	White	Unknown or Not Reported
Reunification	5 (29.4%)	2 (15.4%)	581 (29.1%)	52 (29.7%)	6 (37.5%)	131 (22.4%)	596 (24.1%)	19 (65.5%)
Adoption	4 (23.5%)	11 (84.6%)	916 (45.8%)	66 (37.7%)	10 (62.5%)	334 (57.1%)	1377 (55.6%)	6 (20.7%)
Relative Custody or Guardianship	6 (35.3%)	0 (0.0%)	302 (15.1%)	19 (10.9%)	0 (0.0%)	78 (13.3%)	318 (12.8%)	4 (13.8%)
APPLA	2 (11.8%)	0 (0.0%)	200 (10.0%)	38 (21.7%)	0 (0.0%)	42 (7.2%)	184 (7.4%)	0 (0.0%)
<b>Total</b>	<b>17</b>	<b>13</b>	<b>1999</b>	<b>175</b>	<b>16</b>	<b>585</b>	<b>2475</b>	<b>29</b>

**Race and Gender Across Reunification Recommendations**

Race	Female	Male
American Indian or Alaskan Native	4 (80.0%)	1 (20.0%)
Asian	0 (0.0%)	2 (100%)
Black or African American	280 (48.2%)	301 (51.8%)
Hispanic or Latinx	32 (61.5%)	20 (38.5%)
Native Hawaiian/Other Pacific Islander	3 (50.0%)	3 (50.0%)
Two or More Races "Multi-Racial"	48 (36.6%)	83 (63.4%)
White	265 (44.5%)	331 (55.5%)
Unknown or Not Reported	7 (36.8%)	12 (63.2%)
<b>Total</b>	<b>639 (45.9%)</b>	<b>753 (54.1%)</b>

**Race and Gender Across Adoption Recommendations**

Race	Female	Male
American Indian or Alaskan Native	1 (25.0%)	3 (75.0%)
Asian	5 (45.5%)	6 (54.5%)
Black or African American	416 (45.4%)	500 (54.6%)
Hispanic or Latinx	37 (56.1%)	29 (43.9%)
Native Hawaiian/Other Pacific Islander	3 (30.0%)	7 (70.0%)
Two or More Races "Multi-Racial"	155 (46.4%)	179 (53.6%)
White	613 (44.5%)	764 (55.5%)
Unknown or Not Reported	1 (16.7%)	5 (83.3%)
<b>Total</b>	<b>1231 (45.2%)</b>	<b>1493 (54.8%)</b>

**FOSTER CARE REVIEW DIVISION**  
APPENDICES:  
MAP OF BOARDS

**Boards by Judicial Circuit**

Judicial Circuit	Boards	Judicial Circuit	Boards	Judicial Circuit	Boards
1st Circuit	01A, 01B	7th Circuit	07A, 07B, 07C, 07D	13th Circuit	13B, 13C, 13D, 13E, 13F
2nd Circuit	02A, 02B	8th Circuit	08A, 08B	14th Circuit	14A, 14B
3rd Circuit	03A, 03B	9th Circuit	09A, 09C, 09D, 09E	15th Circuit	15A, 15B, 15C
4th Circuit	04A, 04B	10th Circuit	10A, 10B, 10C	16th Circuit	16A, 16B
5th Circuit	05A, 05B, 05C, 05D, 05E	11th Circuit	11A, 11B		
6th Circuit	06A	12th Circuit	12A, 12B		



**FOSTER CARE REVIEW DIVISION**  
**APPENDICES:**  
**CHILD REVIEW OUTCOMES**  
**BY DSS OFFICE**

Note that the data in this section refers to Child Reviews for each individual child, not for Case Reviews of a sibling group since there are times when a scheduled review is continued or canceled for a sibling while conducted for others. Children scheduled for multiple reviews during the fiscal year are duplicated in the data for each scheduled review.

<b>Lowcountry Region</b>	<b>Total Child Reviews Scheduled</b>	<b>Child Reviews Conducted</b>	<b>Child Reviews Canceled</b>	<b>Child Reviews Continued</b>	<b>Percent of Child Reviews Continued</b>
Lowcountry Adoptions	73	68	0	5	6.8%
Allendale	7	7	0	0	0.0%
Beaufort	96	86	0	10	10.4%
Berkeley	197	185	5	7	3.6%
Calhoun	3	1	0	2	66.7%
Charleston	336	301	13	22	6.5%
Colleton	97	96	0	1	1.0%
Dorchester	104	102	2	0	0.0%
Hampton	30	29	0	1	3.3%
Jasper	51	43	0	8	15.7%
Orangeburg	134	127	6	1	0.7%
<b>Region Total</b>	<b>1128</b>	<b>1045</b>	<b>26</b>	<b>57</b>	<b>5.1%</b>

<b>Midlands Region</b>	<b>Total Child Reviews Scheduled</b>	<b>Child Reviews Conducted</b>	<b>Child Reviews Canceled</b>	<b>Child Reviews Continued</b>	<b>Percent of Child Reviews Continued</b>
Midlands Adoptions	480	338	13	129	26.9%
Aiken	195	170	7	18	9.2%
Bamberg	2	2	0	0	0.0%
Barnwell	16	14	2	0	0.0%
Chester	71	56	6	9	12.7%
Edgefield	29	28	0	1	3.4%
Fairfield	26	16	9	1	3.8%
Kershaw	139	122	3	14	10.1%
Lancaster	91	76	1	14	15.4%
Lexington	201	151	20	30	14.9%
McCormick	7	3	0	4	57.1%
Richland	836	480	37	319	38.2%
Saluda	12	11	1	0	0.0%
York	212	187	0	25	11.8%
<b>Region Total</b>	<b>2317</b>	<b>1654</b>	<b>99</b>	<b>564</b>	<b>24.3%</b>

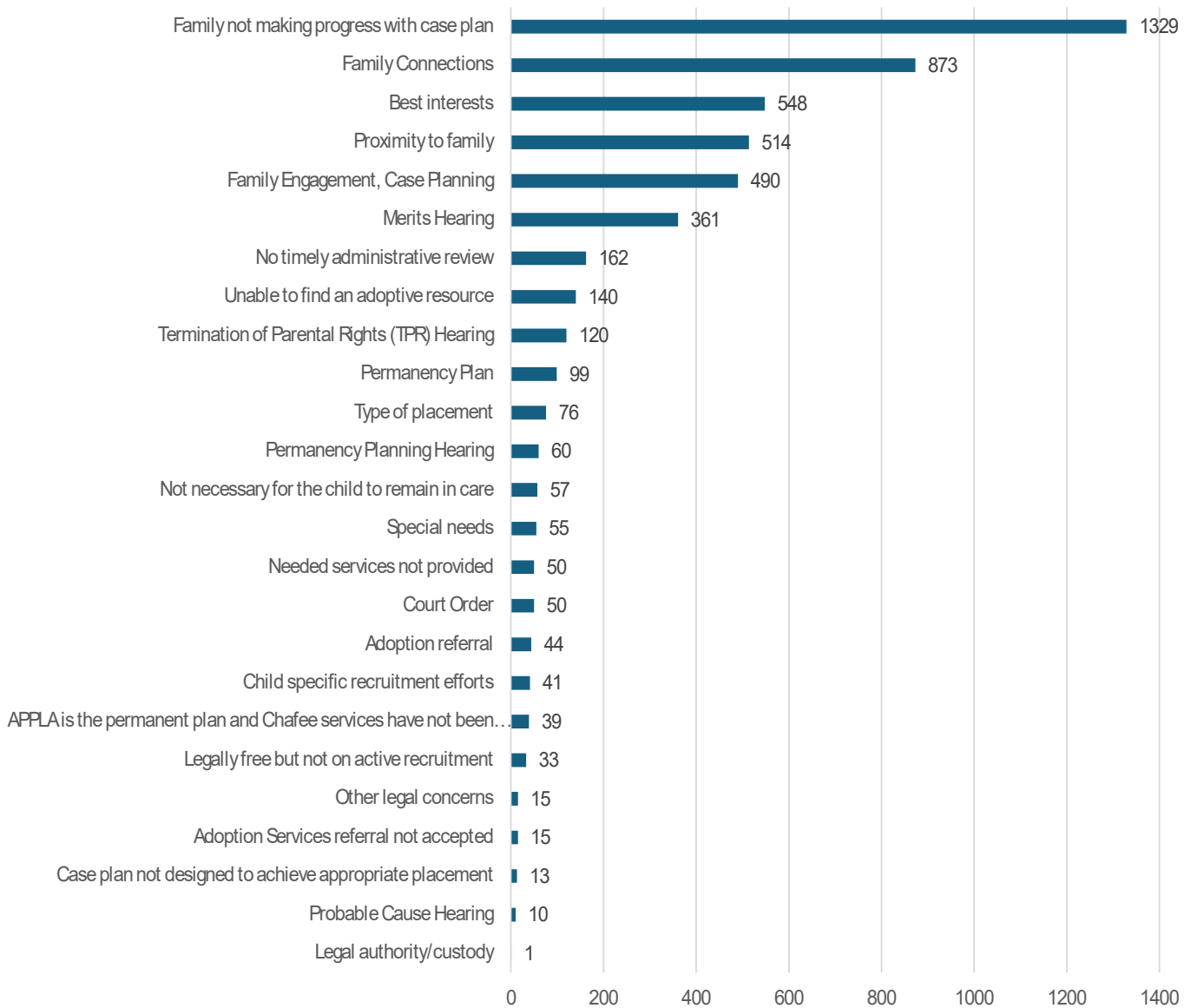
<b>Pee Dee Region</b>	<b>Total Child Reviews Scheduled</b>	<b>Child Reviews Conducted</b>	<b>Child Reviews Canceled</b>	<b>Child Reviews Continued</b>	<b>Percent of Child Reviews Continued</b>
Pee Dee Adoptions	259	206	14	39	15.1%
Chesterfield	19	18	0	1	5.3%
Clarendon	49	47	1	1	2.0%
Darlington	118	114	4	0	0.0%
Dillon	66	66	0	0	0.0%
Florence	97	93	3	1	1.0%
Georgetown	30	29	1	0	0.0%
Horry	312	274	6	32	10.3%
Lee	28	25	3	0	0.0%
Marion	67	64	3	0	0.0%
Marlboro	13	12	0	1	7.7%
Sumter	77	67	2	8	10.4%
Williamsburg	37	24	0	13	35.1%
<b>Region Total</b>	<b>1172</b>	<b>1039</b>	<b>37</b>	<b>96</b>	<b>8.2%</b>

<b>Upstate Region</b>	<b>Total Child Reviews Scheduled</b>	<b>Child Reviews Conducted</b>	<b>Child Reviews Canceled</b>	<b>Child Reviews Continued</b>	<b>Percent of Child Reviews Continued</b>
Upstate Adoptions	333	301	8	24	7.2%
Abbeville	28	28	0	0	0.0%
Anderson	194	173	10	11	5.7%
Cherokee	51	49	0	2	3.9%
Greenville	449	365	17	67	14.9%
Greenwood	87	50	12	25	28.7%
Laurens	162	92	17	53	32.7%
Newberry	27	23	3	1	3.7%
Oconee	91	89	1	1	1.1%
Pickens	80	69	1	10	12.5%
Spartanburg	373	316	16	41	11.0%
Union	18	16	0	2	11.1%
<b>Region Total</b>	<b>1893</b>	<b>1571</b>	<b>85</b>	<b>237</b>	<b>12.5%</b>

<b>South Carolina</b>	<b>Total Child Reviews Scheduled</b>	<b>Child Reviews Conducted</b>	<b>Child Reviews Canceled</b>	<b>Child Reviews Continued</b>	<b>Percent of Child Reviews Continued</b>
Lowcountry Region	1128	1045	26	57	5.1%
Midlands Region	2317	1654	99	564	24.3%
Pee Dee Region	1172	1039	37	96	8.2%
Upstate Region	1893	1571	85	237	12.5%
<b>Total</b>	<b>6510</b>	<b>5309</b>	<b>247</b>	<b>954</b>	<b>14.7%</b>

FOSTER CARE REVIEW DIVISION

APPENDICES:  
BARRIERS IDENTIFIED  
IN FY25



---

**FOSTER CARE REVIEW DIVISION**  
APPENDICES:  
BARRIERS TO PERMANENCY  
CATEGORY 1

---

***Category 1: Reasonable Efforts***

***Requirement 1: The status of each child shall be reviewed no less than once every 6 months.***

- I. Barrier: No timely administrative review
  - a. Barrier Type: Foster Care board review not held
    - i. Cause: Advance Packet not provided
    - ii. Cause: Critical information needed
    - iii. Cause: DSS staff not present
    - iv. Cause: FCRD did not schedule review timely
    - v. Cause: Invitations not sent
    - vi. Cause: Quorum
    - vii. Cause: Unpreventable emergency
    - viii. Cause: Weather
    - ix. Cause: Other

***Requirement 2: The review shall determine whether the child should remain in foster care.***

- I. Barrier: Court Order
  - a. Barrier Type: Court order missing required language
  - b. Barrier Type: No court order
    - i. Cause: Hearing not held
    - ii. Cause: Order not issued
- II. Barrier: Not Necessary for the Child to Remain in Care
  - a. Barrier Type: Assessment determines no immediate safety concern
    - i. Cause: Guardian *ad litem* not in agreement with placement or child return home
    - ii. Cause: Judge not in agreement with placement or child return home
    - iii. Cause: Lack of court time
    - iv. Cause: No parental consent for placement with identified resource
  - b. Barrier Type: Child is in care for reasons other than abuse/neglect by caregivers in loco parentis/parents
    - i. Cause: Adoption disruption
    - ii. Cause: Child trafficking victim
    - iii. Cause: Developmental/Intellectual disability
    - iv. Cause: DJJ
    - v. Cause: Lack of parental knowledge about community resources
    - vi. Cause: Mental/Behavioral health needs
    - vii. Cause: Substance abuse by the child/youth
    - viii. Cause: Other
  - c. Barrier Type: ICPC delay
    - i. Cause: DSS did not request timely
    - ii. Cause: Placement resource uncooperative
    - iii. Cause: Receiving state delay
    - iv. Cause: Other
  - d. Barrier Type: Process delay
    - i. Cause: Adoption finalization delay longer than six months
    - ii. Cause: Family completed services

---

**FOSTER CARE REVIEW DIVISION**  
APPENDICES:  
BARRIERS TO PERMANENCY  
CATEGORY 1

---

***Category 1: Reasonable Efforts***

III. Barrier: Family Connections

- a. Barrier Type: Concerted efforts to find or engage absent parent
  - i. Cause: Delayed assessment of non-custodial parent
  - ii. Cause: No assessment of non-custodial parent
  - iii. Cause: No initial concerted efforts
  - iv. Cause: No ongoing concerted efforts
- b. Barrier Type: Concerted efforts to find or engage kin
  - i. Cause: Delayed assessment of kin
  - ii. Cause: No assessment of kin
  - iii. Cause: No initial concerted efforts
  - iv. Cause: No ongoing concerted efforts
- c. Barrier Type: Lack of visitation with parent(s)
  - i. Cause: Child refuses visits
  - ii. Cause: Parent not attending
  - iii. Cause: Visits were not scheduled
  - iv. Cause: Court order prohibits Parent/Child contact
  - v. Cause: Other

***Requirement 3: The review should determine compliance with the case plan.***

- I. Barrier: Needed services not provided
  - a. Barrier Type: Services not provided timely
    - i. Cause: Delayed referral
    - ii. Cause: Services not available
  - b. Barrier Type: Referral not made
    - i. Cause: Family was not referred
    - ii. Cause: Service provider not available
  - c. Barrier Type: Services/goals do not address reason the child entered foster care as defined by the court findings regarding removal
    - i. Cause: Inadequate or no services provided
    - ii. Cause: Lack of knowledge about resources
    - iii. Cause: Services not available
  - d. Barrier Type: Services/goals do not match needs identified by required assessment
    - i. Cause: Inadequate or no services provided
    - ii. Cause: Lack of knowledge about resources
    - iii. Cause: Services not available
    - iv. Cause: Self-reported lack of understanding about using CANS to identify needed resources
  - e. Barrier Type: Other

---

**FOSTER CARE REVIEW DIVISION**  
APPENDICES:  
BARRIERS TO PERMANENCY  
CATEGORY 1

---

***Category 1: Reasonable Efforts (continued)***

- II. Barrier: Family Engagement, Case Planning
  - a. Barrier Type: Non-citizen child
    - i. Cause: Consulate not notified
    - ii. Cause: Child does not have an immigration attorney representing them
    - iii. Cause: Other process delay
  - b. Barrier Type: No face to face contact with Case Manager
  - c. Barrier Type: Family Permanency Plan (FPP)
    - i. Cause: No Family Permanency Plan (FPP)
    - ii. Cause: Incomplete FPP - CANS not approved
    - iii. Cause: Incomplete FPP - No assessment completed
    - iv. Cause: Incomplete FPP - No required CFTM
    - v. Cause: Incomplete FPP - Not presented to family
    - vi. Cause: Incomplete FPP - Not updated monthly
  - d. Barrier Type: Required assessment not updated timely
    - i. Cause: Delay in approval
    - ii. Cause: Self-reported lack of understanding of need for ongoing assessment
    - iii. Cause: Self-reported policy knowledge gap
    - iv. Cause: Staff turnover
- III. Barrier: Family not making progress with case plan
  - a. Barrier Type: Unable to access services
    - i. Cause: Financial constraints
    - ii. Cause: Inadequate times available
    - iii. Cause: Services not available in this area
    - iv. Cause: Transportation
    - v. Cause: Waitlist/lack of capacity
    - vi. Cause: Other
  - b. Barrier Type: Choosing not to make progress with case plan
    - i. Cause: Denial of abuse or neglect
    - ii. Cause: Denial of paternity or refusal to provide father's information
    - iii. Cause: Refusal to engage with DSS despite concerted efforts being made
    - iv. Cause: Unsuccessful discharge from services
    - v. Cause: Refusing to participate in service(s)
    - vi. Cause: Participating in services but not making necessary behavioral change

---

**FOSTER CARE REVIEW DIVISION**

APPENDICES:  
BARRIERS TO PERMANENCY  
CATEGORY 2

---

***Category 2: Placement***

***Requirement 1: DSS should have legal custody and authority to make placement decisions.***

- I. Barrier: Legal authority/custody
  - a. Barrier Type: Indian tribe not notified as required by ICWA
    - i. Cause: Child not initially identified as ICWA eligible
    - ii. Cause: Lack of understanding of ICWA requirements

***Requirement 2: The child should have a case plan designed to achieve appropriate placement.***

- I. Barrier: Case plan not designed to achieve appropriate placement
  - a. Barrier Type: Placement in case plan does not match current placement
    - i. Cause: DSS inaction
    - ii. Cause: Needed placement not available
    - iii. Cause: Other
  - b. Barrier Type: Placement not adequately addressed in case plan
    - i. Cause: Inadequately addressed
    - ii. Cause: No ongoing assessment of placement
    - iii. Cause: Not included

***Requirement 3: The child should be in an appropriate placement based on type of placement, proximity to parents, best interests, and special needs.***

- I. Barrier: Best Interests
  - a. Barrier Type: Sibling connections
    - i. Cause: Child is not receiving sibling visits
    - ii. Cause: No foster home available for all siblings
    - iii. Cause: Not in the siblings' best interest to be placed together
    - iv. Cause: Other
  - b. Barrier Type: Child's placement is not consistent with Reasonable and Prudent Parenting requirements
    - i. Cause: Child not participating in age appropriate community activities
    - ii. Cause: Child not participating in extracurricular activities
    - iii. Cause: Child not participating in family activities
  - c. Barrier Type: Information regarding the child's best interests is unknown
    - i. Cause: Inadequate/no assessment completed
    - ii. Cause: Information unknown
- II. Barrier: Proximity to Family
  - a. Barrier Type: Not placed in same county as parents
    - i. Cause: No foster home available
    - ii. Cause: No foster home available for needs: Child/youth behaviors
    - iii. Cause: No foster home available for needs: Medically fragile
    - iv. Cause: No foster home available for needs: Mental/behavioral
    - v. Cause: No foster home available for needs: Non-English speaking
    - vi. Cause: Placed with kin
    - vii. Cause: Stable placement and do not want to disrupt
    - viii. Cause: Parent moved out of county after the child entered foster care
    - ix. Cause: Parent already lived out of state/country prior to child's placement in foster care
    - x. Cause: Other

---

**FOSTER CARE REVIEW DIVISION**

APPENDICES:  
BARRIERS TO PERMANENCY  
CATEGORY 2

---

***Category 2: Placement (continued)***

III. Barrier: Special needs

- a. Barrier Type: Placement is not meeting child's educational needs
  - i. Cause: Child is not enrolled or is not attending school regularly
  - ii. Cause: Child not receiving adequate educational supports
  - iii. Cause: No IEP in place
  - iv. Cause: Proper accommodations not being made
- b. Barrier Type: Placement is not meeting child's mental/behavioral health needs
  - i. Cause: Child not receiving appropriate therapy services
  - ii. Cause: Child not receiving prescribed medication: child is refusing medication
  - iii. Cause: Child not receiving prescribed medication: placement is not administering medication
  - iv. Cause: Child refusing treatment services
  - v. Cause: Placement does not offer necessary services
  - vi. Cause: Supports not put in place
- c. Barrier Type: Placement is not meeting child's medical needs
  - i. Cause: Not receiving proper medical care for chronic condition
  - ii. Cause: Not receiving timely treatment
  - iii. Cause: Placement refusing to give child prescribed medication
- d. Barrier Type: QRTP placement is not appropriate and/or is not documented appropriately
  - i. Cause: Court review did not approve placement
  - ii. Cause: No court review within 60 days
  - iii. Cause: Required written documentation is not included in the case plan
  - iv. Cause: Required written documentation is not included in the court order

IV. Barrier: Type of placement

- a. Barrier Type: Child is not in a stable placement that meets the child's needs
  - i. Cause: Child is on runaway or missing from placement
  - ii. Cause: Child refuses placement
  - iii. Cause: No appropriate placement available
  - iv. Cause: Other
- b. Barrier Type: Placement type is not appropriate based on family-like setting due to permanency plan of Termination of Parental Rights and Adoption
  - i. Cause: Child is in need of treatment services that cannot be appropriately provided within the adoptive home
  - ii. Cause: Child is placed with kin where KinGap is appropriate
  - iii. Cause: Family has submitted an application for adoption but are not yet approved
  - iv. Cause: Foster parents are appealing the child being removed from their home
  - v. Cause: Foster parent interested in adoption but has not yet submitted a complete application
- c. Barrier Type: Placement type is not least restrictive setting and is not appropriate based on plan for Reunification and child's needs
- d. Barrier Type: Placement type is not least restrictive setting and is not appropriate based on viability of relative/third party placement

---

**FOSTER CARE REVIEW DIVISION**

APPENDICES:  
BARRIERS TO PERMANENCY  
CATEGORY 3

---

***Category 3: Permanency***

***Requirement 1: Children in foster care will have timely court hearings and legal proceedings so as not to delay permanency.***

- I. Barrier: Permanency Plan
  - a. Barrier Type: Court ordered permanency plan is not in the child's best interests
  - b. Barrier Type: Did not forego reasonable efforts despite grounds
  - c. Barrier Type: No concurrent plan
- II. Barrier: Probable Cause Hearing
  - a. Barrier Type: Delayed Probable Cause
    - i. Cause: Defendant
    - ii. Cause: DSS
    - iii. Cause: Guardian ad Litem
    - iv. Cause: Insufficient court time for trial
    - v. Cause: Other
  - b. Barrier Type: No Probable Cause
    - i. Cause: Defendant
    - ii. Cause: DSS
    - iii. Cause: Guardian ad Litem
    - iv. Cause: Other
- III. Barrier: Merits Hearing
  - a. Barrier Type: Delayed Merits
    - i. Cause: Defendant
    - ii. Cause: DSS
    - iii. Cause: Guardian ad Litem
    - iv. Cause: Insufficient court time for trial
    - v. Cause: Other
  - b. Barrier Type: No Merits
    - i. Cause: Defendant
    - ii. Cause: DSS
    - iii. Cause: Guardian ad Litem
    - iv. Cause: Insufficient court time for trial
    - v. Cause: Other
- IV. Barrier: Permanency Planning Hearing (PPH)
  - a. Barrier Type: Delayed PPH
    - i. Cause: Defendant
    - ii. Cause: DSS
    - iii. Cause: Guardian ad Litem
    - iv. Cause: Insufficient court time for trial
    - v. Cause: Other
  - b. Barrier Type: No PPH
    - i. Cause: Defendant
    - ii. Cause: DSS
    - iii. Cause: Guardian ad Litem
    - iv. Cause: Insufficient court time for trial
    - v. Cause: Other

---

**FOSTER CARE REVIEW DIVISION**

APPENDICES:  
BARRIERS TO PERMANENCY  
CATEGORY 3

---

***Category 3: Permanency (continued)***

- V. Barrier: Termination of Parental Rights (TPR) Hearing
  - a. Barrier Type: TPR hearing not held timely
    - i. Cause: Defendant
    - ii. Cause: DSS
    - iii. Cause: Guardian ad Litem
    - iv. Cause: Insufficient court time for trial
    - v. Cause: Other
  - b. Barrier Type: TPR not filed
    - i. Cause: Defendant
    - ii. Cause: DSS
    - iii. Cause: Guardian ad Litem
    - iv. Cause: Other
- VI. Barrier: Other legal concerns
  - a. Barrier Type: Child Guardian ad Litem not appointed
  - b. Barrier Type: Non-compliance with court order
    - i. Cause: DSS
    - ii. Cause: Parent/caregiver
    - iii. Cause: Other
  - c. Barrier Type: Parent Guardian ad Litem not appointed

***Requirement 2: DSS should make efforts to acquire a permanent home and plan for permanency for legally free children.***

- I. Barrier: Adoption referral
  - a. Barrier Type: Delayed referral
  - b. Barrier Type: No referral
- II. Barrier: Adoption services referral not accepted
  - a. Barrier Type: Child's behaviors
  - b. Barrier Type: DJJ-involved youth
  - c. Barrier Type: Merits hearing not held
  - d. Barrier Type: No legally free letter
    - i. Cause: TPR is under appeal
    - ii. Cause: Other
  - e. Barrier Type: TPR not completed
  - f. Barrier Type: Other
- III. Barrier: Legally free but not on active recruitment
  - a. Barrier Type: DJJ placement and/or criminal charges
  - b. Barrier Type: Youth refused/not interested in being adopted
    - i. Cause: Has other transition plan
    - ii. Cause: Inadequate adoption counseling
  - c. Barrier Type: Mental/behavioral health
  - d. Barrier Type: Other

---

**FOSTER CARE REVIEW DIVISION**

APPENDICES:  
BARRIERS TO PERMANENCY  
CATEGORY 3

---

***Category 3: Permanency (continued)***

- IV. Barrier: APPLA is the permanent plan and Chafee services have not been assessed for or utilized adequately
  - a. Barrier Type: Inadequate assessment of youth's needs
  - b. Barrier Type: Inadequate use of available Chafee services
  - c. Barrier Type: Inappropriate plan of APPLA
  - d. Barrier Type: No transition plan for youth 17 years old
- V. Barrier: Child specific recruitment efforts
  - a. Barrier Type: Siblings not being recruited together
    - i. Cause: Children's behavioral needs cannot be met together
    - ii. Cause: Safety concern
    - iii. Cause: Other
  - b. Barrier Type: Adopt US Kids
  - c. Barrier Type: No Heart Gallery
  - d. Barrier Type: Not listed on Seedlings
- VI. Barrier: Unable to find an adoptive resource
  - a. Barrier Type: No matching families for child's needs
    - i. Cause: Medical needs
    - ii. Cause: Mental/behavioral health needs
    - iii. Cause: LGBTQ+
  - b. Barrier Type: No matching families for age
  - c. Barrier Type: No matching families for gender
  - d. Barrier Type: No matching families for sibling group

**FOSTER CARE REVIEW DIVISION**  
**APPENDICES:**  
**BP CATEGORY 1 DETAILS**

Note that the "Count of Occurrences" in this section refers to the number of times each of the BPs was identified during FY25. The "Percent of Children Impacted" refers to the percent of the children reviewed at least once during FY25 who were impacted by each BP.

Category 1: Reasonable Efforts

Requirement 2: The review shall determine whether the child should remain in foster care.

**Barrier: Family Not Making Progress with Case Plan**

This Barrier was identified for 37.3% of children who were reviewed at least once during FY25.

<b>Barrier Type - Unable to Access Services</b>	<b>Count of Occurrences in FY25</b>	<b>Percent of Children Impacted</b>
Cause: Financial constraints	47	1.3%
Cause: Inadequate times available	4	0.1%
Cause: Services not available in this area	33	0.9%
Cause: Transportation	41	1.2%
Cause: Waitlist/Lack of capacity	38	1.1%
Cause: Other or cause not documented	13	0.4%
<b>Total for this Barrier Type</b>	<b>176</b>	<b>4.9%</b>

<b>Barrier Type - Choosing Not to Make Progress with Case Plan</b>	<b>Count of Occurrences in FY25</b>	<b>Percent of Children Impacted</b>
Cause: Denial of abuse or neglect	23	0.6%
Cause: Denial of paternity or refusal to provide father's information	16	0.4%
Cause: Refusal to engage with DSS despite concerted efforts being made	651	18.3%
Cause: Unsuccessful discharge from services	93	2.6%
Cause: Refusing to participate in services	208	5.8%
Cause: Participating in services but not making necessary behavioral change	0	0.0%
Cause: Other or cause not documented	162	4.6%
<b>Total for this Barrier Type</b>	<b>1153</b>	<b>32.4%</b>

**FOSTER CARE REVIEW DIVISION**  
**APPENDICES:**  
**BP CATEGORY 1 DETAILS**

Category 1: Reasonable Efforts

Requirement 2: The review shall determine whether the child should remain in foster care.

**Barrier: Court Order**

This Barrier was identified for 1.4% of children who were reviewed at least once during FY25.

<b>Barrier Type - Court Order Missing Required Language</b>	<b>Count of Occurrences in FY25</b>	<b>Percent of Children Impacted</b>
Cause: Court order missing required language	0	0.0%
<b>Total for this Barrier Type</b>	<b>0</b>	<b>0.0%</b>

<b>Barrier Type - No Court Order</b>	<b>Count of Occurrences in FY25</b>	<b>Percent of Children Impacted</b>
Cause: Hearing not held	4	0.1%
Cause: Order not issued	25	0.7%
Cause: Other or cause not documented	21	0.6%
<b>Total for this Barrier Type</b>	<b>162</b>	<b>1.4%</b>

Category 1: Reasonable Efforts

Requirement 1: The status of each child shall be reviewed no less than once every six months.

**Barrier: No Timely Administrative Review**

This Barrier was identified for 4.6% of children who were reviewed at least once during FY25.

<b>Barrier Type - Foster Care Board Review Not Held</b>	<b>Count of Occurrences in FY25</b>	<b>Percent of Children Impacted</b>
Cause: Advance packet not provided	91	2.6%
Cause: Critical information needed	3	0.1%
Cause: DSS staff not present	3	0.1%
Cause: FCRD did not schedule review timely	16	0.4%
Cause: Invitations not sent	0	0.0%
Cause: Quorum	0	0.0%
Cause: Unpreventable emergency	0	0.0%
Cause: Weather	31	0.9%
Cause: Other or cause not documented	18	0.5%
<b>Total for this Barrier Type</b>	<b>162</b>	<b>4.6%</b>

**FOSTER CARE REVIEW DIVISION**  
**APPENDICES:**  
**BP CATEGORY 1 DETAILS**

Category 1: Reasonable Efforts  
Requirement 2: The review shall determine whether the child should remain in foster care.

**Barrier: Family Connections**

This Barrier was identified for 24.5% of children who were reviewed at least once during FY25.

<b>Barrier Type - Lack of Visitation with Parent(s)</b>	<b>Count of Occurrences in FY25</b>	<b>Percent of Children Impacted</b>
Cause: Child refuses visits	74	2.1%
Cause: Parent not attending	439	12.3%
Cause: Visits were not scheduled	62	1.7%
Cause: Court order prohibits parent/child contact	50	1.4%
Cause: Other or cause not documented	168	4.7%
<b>Total for this Barrier Type</b>	<b>793</b>	<b>22.3%</b>

<b>Barrier Type - Concerted Efforts to Find or Engage Kin</b>	<b>Count of Occurrences in FY25</b>	<b>Percent of Children Impacted</b>
Cause: Delayed assessment of kin	1	0.0%
Cause: No assessment of kin	2	0.1%
Cause: No initial concerted efforts	4	0.1%
Cause: No ongoing concerted efforts	22	0.6%
Cause: Other or cause not documented	3	0.1%
<b>Total for this Barrier Type</b>	<b>32</b>	<b>0.9%</b>

<b>Barrier Type - Concerted Efforts to Find or Engage Absent Parent</b>	<b>Count of Occurrences in FY25</b>	<b>Percent of Children Impacted</b>
Cause: Delayed assessment of non-custodial parent	0	0.0%
Cause: No assessment of non-custodial parent	5	0.1%
Cause: No initial concerted efforts	9	0.3%
Cause: No ongoing concerted efforts	30	0.8%
Cause: Other or cause not documented	4	0.1%
<b>Total for this Barrier Type</b>	<b>48</b>	<b>1.3%</b>

**FOSTER CARE REVIEW DIVISION**  
**APPENDICES:**  
**BP CATEGORY 1 DETAILS**

Category 1: Reasonable Efforts

Requirement 2: The review shall determine whether the child should remain in foster care.

**Barrier: Not Necessary for the Child to Remain in Care**

This Barrier was identified for 1.5% of children who were reviewed at least once during FY25.

<b>Barrier Type - Assessment Determines no Immediate Safety Concern</b>	<b>Count of Occurrences in FY25</b>	<b>Percent of Children Impacted</b>
Cause: Guardian <i>ad Litem</i> not in agreement with placement/child return home	4	0.1%
Cause: Judge not in agreement with placement or child return home	0	0.0%
Cause: Lack of court time	0	0.0%
Cause: No parental consent for placement with identified resource	1	0.0%
<b>Total for this Barrier Type</b>	<b>5</b>	<b>0.1%</b>

<b>Barrier Type - Child is in Care for Reasons Other than Abuse/Neglect by Caregivers in Loco Parentis/Parents</b>	<b>Count of Occurrences in FY25</b>	<b>Percent of Children Impacted</b>
Cause: Adoption disruption	1	0.0%
Cause: Child trafficking victim	0	0.0%
Cause: Developmental/Intellectual disability	1	0.0%
Cause: DJJ	2	0.1%
Cause: Lack of parental knowledge about community resources	0	0.0%
Cause: Mental/Behavioral health needs	3	0.1%
Cause: Substance abuse by the child/youth	0	0.0%
Cause: Other or cause not documented	4	0.1%
<b>Total for this Barrier Type</b>	<b>11</b>	<b>0.3%</b>

**FOSTER CARE REVIEW DIVISION**  
**APPENDICES:**  
**BP CATEGORY 1 DETAILS**

Category 1: Reasonable Efforts

Requirement 2: The review shall determine whether the child should remain in foster care.

**Barrier: Not Necessary for the Child to Remain in Care (continued from previous page)**

This Barrier was identified for 1.5% of children who were reviewed at least once during FY25.

<b>Barrier Type - Interstate Compact on the Placement of Children (ICPC) Delay</b>	<b>Count of Occurrences in FY25</b>	<b>Percent of Children Impacted</b>
Cause: DSS did not request timely	0	0.0%
Cause: Placement resource uncooperative	1	0.0%
Cause: Receiving state delay	4	0.1%
Cause: Other or cause not documented	13	0.4%
<b>Total for this Barrier Type</b>	<b>18</b>	<b>0.5%</b>

<b>Barrier Type - Process Delay</b>	<b>Count of Occurrences in FY25</b>	<b>Percent of Children Impacted</b>
Cause: Adoption finalization delay longer than six months	8	0.2%
Cause: Family completed services	10	0.3%
Cause: Other or cause not documented	5	0.1%
<b>Total for this Barrier Type</b>	<b>23</b>	<b>0.6%</b>

Category 1: Reasonable Efforts

Requirement 3: The review should determine compliance with the case plan.

**Barrier: Family Engagement, Case Planning**

This Barrier was identified for 13.7% of children who were reviewed at least once during FY25.

<b>Barrier Type - Family Permanency Plan (FPP)</b>	<b>Count of Occurrences in FY25</b>	<b>Percent of Children Impacted</b>
Cause: Incomplete FPP - Child and Adolescent Needs and Strengths (CANS) not approved	56	1.6%
Cause: Incomplete FPP - No assessment completed	7	0.2%
Cause: Incomplete FPP - No required CFTM (child and family team meeting)	45	1.3%
Cause: Incomplete FPP - Not presented to family	1	0.0%
Cause: Incomplete FPP - Not updated monthly	30	0.8%
Cause: No Family Permanency Plan (FPP)	286	8.0%
Cause: Other or cause not documented	28	0.8%
<b>Total for this Barrier Type</b>	<b>453</b>	<b>12.7%</b>

FOSTER CARE REVIEW DIVISION  
APPENDICES:  
BP CATEGORY 1 DETAILS

Category 1: Reasonable Efforts

Requirement 3: The review should determine compliance with the case plan.

**Barrier: Family Engagement, Case Planning (continued from previous page)**

This Barrier was identified for 13.7% of children who were reviewed at least once during FY25.

<b>Barrier Type - No Face to Face Contact with Case Manager</b>	<b>Count of Occurrences in FY25</b>	<b>Percent of Children Impacted</b>
Cause: No Face to Face contact with Case Manager	30	0.8%
<b>Total for this Barrier Type</b>	<b>30</b>	<b>0.8%</b>

<b>Barrier Type - Non-Citizen Child</b>	<b>Count of Occurrences in FY25</b>	<b>Percent of Children Impacted</b>
Cause: Child does not have an immigration attorney representing them	0	0.0%
Cause: Consulate not notified	0	0.0%
Cause: Other process delay	3	0.1%
<b>Total for this Barrier Type</b>	<b>3</b>	<b>0.1%</b>

<b>Barrier Type - Required Assessment Not Updated Timely</b>	<b>Count of Occurrences in FY25</b>	<b>Percent of Children Impacted</b>
Cause: Delay in approval	2	0.1%
Cause: Self-reported lack of understanding of need for ongoing assessment	0	0.0%
Cause: Self-reported policy knowledge gap	0	0.0%
Cause: Staff turnover	2	0.1%
<b>Total for this Barrier Type</b>	<b>4</b>	<b>0.1%</b>

FOSTER CARE REVIEW DIVISION  
APPENDICES:  
BP CATEGORY 1 DETAILS

Category 1: Reasonable Efforts

Requirement 3: The review should determine compliance with the case plan.

**Barrier: Needed Services Not Provided**

This Barrier was identified for 1.4% of children who were reviewed at least once during FY25.

Barrier Type - Services Not Provided Timely	Count of Occurrences in FY25	Percent of Children Impacted
Cause: Delayed referral	6	0.2%
Cause: Services not available	2	0.1%
Cause: Other or cause not documented	2	0.1%
<b>Total for this Barrier Type</b>	<b>10</b>	<b>0.3%</b>

Barrier Type - Referral Not Made	Count of Occurrences in FY25	Percent of Children Impacted
Cause: Family was not referred	4	0.1%
Cause: Service provider not available	4	0.1%
Cause: Other or cause not documented	3	0.1%
<b>Total for this Barrier Type</b>	<b>11</b>	<b>0.3%</b>

Barrier Type - Services/Goals Do Not Address Reason the Child Entered Care as Defined by the Court Findings Regarding Removal	Count of Occurrences in FY25	Percent of Children Impacted
Cause: Inadequate or no services provided	0	0.0%
Cause: Lack of knowledge about resources	0	0.0%
Cause: Services not available	0	0.0%
<b>Total for this Barrier Type</b>	<b>0</b>	<b>0.0%</b>

FOSTER CARE REVIEW DIVISION  
APPENDICES:  
BP CATEGORY 1 DETAILS

Category 1: Reasonable Efforts

Requirement 3: The review should determine compliance with the case plan.

**Barrier: Needed Services Not Provided (continued from previous page)**

This Barrier was identified for 1.4% of children who were reviewed at least once during FY25.

Barrier Type - Services/Goals Do Not Match Needs Identified by Required Assessment	Count of Occurrences in FY25	Percent of Children Impacted
Cause: Inadequate or no services provided	2	0.1%
Cause: Lack of knowledge about resources	5	0.1%
Cause: Services not available	0	0.0%
Cause: Self-reported lack of understanding of using CANS to identify resources	0	0.0%
<b>Total for this Barrier Type</b>	<b>7</b>	<b>0.2%</b>

Barrier Type - Other	Count of Occurrences in FY25	Percent of Children Impacted
Cause: Other or cause not documented	22	0.6%
<b>Total for this Barrier Type</b>	<b>22</b>	<b>0.6%</b>

**FOSTER CARE REVIEW DIVISION**  
**APPENDICES:**  
**BP CATEGORY 2 DETAILS**

Category 2: Placement

Requirement 1: DSS should have legal custody and authority to make placement decisions.

**Barrier: Legal Authority/Custody**

This Barrier was identified for 0.0% of children who were reviewed at least once during FY25.

<b>Barrier Type - Indian Tribe Not Notified as Required by ICWA</b>	<b>Count of Occurrences in FY25</b>	<b>Percent of Children Impacted</b>
Cause: Child not initially identified as ICWA eligible	0	0.0%
Cause: Lack of understanding of ICWA requirements	0	0.0%
Cause: Other or cause not documented	1	0.0%
<b>Total for this Barrier Type</b>	<b>1</b>	<b>0.0%</b>

Category 2: Placement

Requirement 2: The child should have a case plan designed to achieve appropriate placement.

**Barrier: Case Plan Not Designed to Achieve Appropriate Placement**

This Barrier was identified for 0.4% of children who were reviewed at least once during FY25.

<b>Barrier Type - Placement in Case Plan Does Not Match Current Placement</b>	<b>Count of Occurrences in FY25</b>	<b>Percent of Children Impacted</b>
Cause: DSS inaction	0	0.0%
Cause: Needed placement not available	4	0.1%
Cause: Other or cause not documented	9	0.3%
<b>Total for this Barrier Type</b>	<b>13</b>	<b>0.4%</b>

<b>Barrier Type - Placement Not Adequately Addressed in Case Plan</b>	<b>Count of Occurrences in FY25</b>	<b>Percent of Children Impacted</b>
Cause: Inadequately addressed	0	0.0%
Cause: No ongoing assessment of placement	0	0.0%
Cause: Not included	0	0.0%
<b>Total for this Barrier Type</b>	<b>0</b>	<b>0.0%</b>

**FOSTER CARE REVIEW DIVISION**  
**APPENDICES:**  
**BP CATEGORY 2 DETAILS**

Category 2: Placement

Requirement 3: The child should be in an appropriate placement based on type of placement, proximity to parents, best interests, and special needs.

**Barrier: Best Interests**

This Barrier was identified for 15.4% of children who were reviewed at least once during FY25.

<b>Barrier Type - Sibling Connections</b>	<b>Count of Occurrences in FY25</b>	<b>Percent of Children Impacted</b>
Cause: Child is not receiving sibling visits	83	2.3%
Cause: No foster home available for all siblings	356	10.0%
Cause: Not in the siblings' best interest to be placed together	61	1.7%
Cause: Other or cause not documented	28	0.8%
<b>Total for this Barrier Type</b>	<b>528</b>	<b>14.8%</b>

<b>Barrier Type - Child's Placement is Not Consistent with Reasonable and Prudent Parenting Requirements</b>	<b>Count of Occurrences in FY25</b>	<b>Percent of Children Impacted</b>
Cause: Child not participating in age appropriate community activities	8	0.2%
Cause: Child not participating in extracurricular activities	3	0.1%
Cause: Child not participating in family activities	3	0.1%
<b>Total for this Barrier Type</b>	<b>14</b>	<b>0.4%</b>

<b>Barrier Type - Information Regarding the Child's Best Interests is Unknown</b>	<b>Count of Occurrences in FY25</b>	<b>Percent of Children Impacted</b>
Cause: Inadequate/No assessment completed	2	0.1%
Cause: Information unknown	4	0.1%
<b>Total for this Barrier Type</b>	<b>6</b>	<b>0.2%</b>

**FOSTER CARE REVIEW DIVISION**  
**APPENDICES:**  
**BP CATEGORY 2 DETAILS**

Category 2: Placement

Requirement 3: The child should be in an appropriate placement based on type of placement, proximity to parents, best interests, and special needs.

**Barrier: Proximity to Family**

This Barrier was identified for 14.4% of children who were reviewed at least once during FY25.

<b>Barrier Type - Not Placed in Same County as Parents</b>	<b>Count of Occurrences in FY25</b>	<b>Percent of Children Impacted</b>
Cause: No foster home available	94	2.6%
Cause: No foster home available for needs: Child/Youth behaviors	37	1.0%
Cause: No foster home available for needs: Medically fragile	4	0.1%
Cause: No foster home available for needs: Mental/Behavioral	15	0.4%
Cause: No foster home available for needs: Non-English speaking	1	0.0%
Cause: Placed with kin	71	2.0%
Cause: Stable placement and do not want to disrupt	104	2.9%
Cause: Parent moved out of county after the child entered foster care	1	0.0%
Cause: Parent already lived out of state/country prior to child's placement in care	8	0.2%
Cause: Other or cause not documented	179	5.0%
<b>Total for this Barrier Type</b>	<b>514</b>	<b>14.4%</b>

Category 2: Placement

Requirement 3: The child should be in an appropriate placement based on type of placement, proximity to parents, best interests, and special needs.

**Barrier: Special Needs**

This Barrier was identified for 1.5% of children who were reviewed at least once during FY25.

<b>Barrier Type - Placement is Not Meeting the Child's Educational Needs</b>	<b>Count of Occurrences in FY25</b>	<b>Percent of Children Impacted</b>
Cause: Child is not enrolled or is not attending school regularly	14	0.4%
Cause: Child not receiving adequate educational supports	0	0.0%
Cause: No IEP in place	0	0.0%
Cause: Proper accommodations not being made	1	0.0%
Cause: Other or cause not documented	6	0.2%
<b>Total for this Barrier Type</b>	<b>21</b>	<b>0.6%</b>

**FOSTER CARE REVIEW DIVISION**  
**APPENDICES:**  
**BP CATEGORY 2 DETAILS**

Category 2: Placement

Requirement 3: The child should be in an appropriate placement based on type of placement, proximity to parents, best interests, and special needs.

**Barrier: Special Needs (continued from previous page)**

This Barrier was identified for 1.6% of children who were reviewed at least once during FY25.

<b>Barrier Type - Placement is Not Meeting Child's Mental/Behavioral Health Needs</b>	<b>Count of Occurrences in FY25</b>	<b>Percent of Children Impacted</b>
Cause: Child not receiving appropriate therapy services	10	0.3%
Cause: Child not receiving prescribed medication: child is refusing medication	1	0.0%
Cause: Child not receiving prescribed medication: placement is not administering medication	0	0.0%
Cause: Child refusing treatment services	8	0.2%
Cause: Placement does not offer necessary services	3	0.1%
Cause: Supports not put in place	1	0.0%
Cause: Other or cause not documented	6	0.2%
<b>Total for this Barrier Type</b>	<b>29</b>	<b>0.8%</b>

<b>Barrier Type - Placement is Not Meeting Child's Medical Needs</b>	<b>Count of Occurrences in FY25</b>	<b>Percent of Children Impacted</b>
Cause: Not receiving proper medical care for chronic condition	1	0.0%
Cause: Not receiving timely treatment	3	0.1%
Cause: Placement refusing to give child prescribed medication	0	0.0%
Cause: Other or cause not documented	1	0.0%
<b>Total for this Barrier Type</b>	<b>5</b>	<b>0.1%</b>

<b>Barrier Type - Qualified Residential Treatment Program (QRTP) Placement is Not Appropriate and/or is Not Documented Appropriately</b>	<b>Count of Occurrences in FY25</b>	<b>Percent of Children Impacted</b>
Cause: Court review did not approve placement	0	0.0%
Cause: No court review within 60 days	0	0.0%
Cause: Required written documentation is not included in the case plan	0	0.0%
Cause: Required written documentation is not included in the court order	0	0.0%
<b>Total for this Barrier Type</b>	<b>0</b>	<b>0.0%</b>

**FOSTER CARE REVIEW DIVISION**  
**APPENDICES:**  
**BP CATEGORY 2 DETAILS**

Category 2: Placement

Requirement 3: The child should be in an appropriate placement based on type of placement, proximity to parents, best interests, and special needs.

**Barrier: Type of Placement**

This Barrier was identified for 2.1% of children who were reviewed at least once during FY25.

<b>Barrier Type - Child is Not in a Stable Placement that Meets Child's Needs</b>	<b>Count of Occurrences in FY25</b>	<b>Percent of Children Impacted</b>
Cause: Child is on runaway or missing from placement	10	0.3%
Cause: Child refuses placement	0	0.0%
Cause: No appropriate placement available	15	0.4%
Cause: Other or cause not documented	5	0.1%
<b>Total for this Barrier Type</b>	<b>30</b>	<b>0.8%</b>

<b>Barrier Type - Placement Type is Not Appropriate Based on Family-Like Setting Due to Permanency Plan of Termination of Parental Rights and Adoption</b>	<b>Count of Occurrences in FY25</b>	<b>Percent of Children Impacted</b>
Cause: Child is in need of treatment services that cannot be appropriately provided within the adoptive home	19	0.5%
Cause: Child is placed with kin where KinGap is appropriate	0	0.0%
Cause: Family submitted an application for adoption but are not yet approved	0	0.0%
Cause: Foster parents are appealing the child being removed from their home	1	0.0%
Cause: Foster parent interested in adoption - has not submitted an application	1	0.0%
<b>Total for this Barrier Type</b>	<b>21</b>	<b>0.6%</b>

<b>Barrier Type - Placement Type is Not Least Restrictive Setting and is Not Appropriate Based on Plan for Reunification and Child's Needs</b>	<b>Count of Occurrences in FY25</b>	<b>Percent of Children Impacted</b>
Cause: Placement type is not least restrictive setting and is not appropriate based on plan for Reunification and child's needs	13	0.4%
<b>Total for this Barrier Type</b>	<b>13</b>	<b>0.4%</b>

<b>Barrier Type - Placement Type is Not Least Restrictive Setting and is Not Appropriate Based on Viability of Relative/Third Party Placement</b>	<b>Count of Occurrences in FY25</b>	<b>Percent of Children Impacted</b>
Cause: Placement type is not least restrictive setting and is not appropriate based on viability of relative/third party placement	12	0.3%
<b>Total for this Barrier Type</b>	<b>12</b>	<b>0.3%</b>

FOSTER CARE REVIEW DIVISION  
APPENDICES:  
BP CATEGORY 3 DETAILS

Category 3: Permanency

Requirement 1: Children in foster care will have timely court hearings and legal proceedings so as not to delay permanency.

**Barrier: Permanency Plan**

This Barrier was identified for 2.8% of children who were reviewed at least once during FY25.

Barrier Type - Court Ordered Permanency Plan is Not in the Child's Best Interests	Count of Occurrences in FY25	Percent of Children Impacted
Cause: Court ordered permanency plan is not in the child's best interests	20	0.6%
<b>Total for this Barrier Type</b>	<b>20</b>	<b>0.6%</b>

Barrier Type - Did Not Forego Reasonable Efforts Despite Grounds	Count of Occurrences in FY25	Percent of Children Impacted
Cause: Did not forego reasonable efforts despite grounds	7	0.2%
<b>Total for this Barrier Type</b>	<b>7</b>	<b>0.2%</b>

Barrier Type - No Concurrent Plan	Count of Occurrences in FY25	Percent of Children Impacted
Cause: No concurrent plan	72	2.0%
<b>Total for this Barrier Type</b>	<b>72</b>	<b>2.0%</b>

FOSTER CARE REVIEW DIVISION  
APPENDICES:  
BP CATEGORY 3 DETAILS

Category 3: Permanency

Requirement 1: Children in foster care will have timely court hearings and legal proceedings so as not to delay permanency.

**Barrier: Probable Cause Hearing**

This Barrier was identified for 0.3% of children who were reviewed at least once during FY25.

<b>Barrier Type - Delayed Probable Cause</b>	<b>Count of Occurrences in FY25</b>	<b>Percent of Children Impacted</b>
Cause: Defendant	1	0.0%
Cause: DSS	3	0.1%
Cause: Guardian <i>ad Litem</i>	0	0.0%
Cause: Insufficient court time for trial	0	0.0%
Cause: Other or cause not documented	4	0.1%
<b>Total for this Barrier Type</b>	<b>8</b>	<b>0.2%</b>

<b>Barrier Type - No Probable Cause</b>	<b>Count of Occurrences in FY25</b>	<b>Percent of Children Impacted</b>
Cause: Defendant	0	0.0%
Cause: DSS	0	0.0%
Cause: Guardian <i>ad Litem</i>	0	0.0%
Cause: Other or cause not documented	2	0.1%
<b>Total for this Barrier Type</b>	<b>2</b>	<b>0.1%</b>

**FOSTER CARE REVIEW DIVISION**  
**APPENDICES:**  
**BP CATEGORY 3 DETAILS**

Category 3: Permanency

Requirement 1: Children in foster care will have timely court hearings and legal proceedings so as not to delay permanency.

**Barrier: Merits Hearing**

This Barrier was identified for 10.1% of children who were reviewed at least once during FY25.

<b>Barrier Type - Delayed Merits</b>	<b>Count of Occurrences in FY25</b>	<b>Percent of Children Impacted</b>
Cause: Defendant	48	1.3%
Cause: DSS	15	0.4%
Cause: Guardian <i>ad Litem</i>	3	0.1%
Cause: Insufficient court time for trial	16	0.4%
Cause: Other or cause not documented	59	1.7%
<b>Total for this Barrier Type</b>	<b>141</b>	<b>4.0%</b>

<b>Barrier Type - No Merits</b>	<b>Count of Occurrences in FY25</b>	<b>Percent of Children Impacted</b>
Cause: Defendant	90	2.5%
Cause: DSS	22	0.6%
Cause: Guardian <i>ad Litem</i>	2	0.1%
Cause: Insufficient court time for trial	39	1.1%
Cause: Other or cause not documented	67	1.9%
<b>Total for this Barrier Type</b>	<b>220</b>	<b>6.2%</b>

FOSTER CARE REVIEW DIVISION  
APPENDICES:  
BP CATEGORY 3 DETAILS

Category 3: Permanency

Requirement 1: Children in foster care will have timely court hearings and legal proceedings so as not to delay permanency.

**Barrier: Permanency Planning Hearing (PPH)**

This Barrier was identified for 1.7% of children who were reviewed at least once during FY25.

Barrier Type - Delayed Permanency Planning Hearing	Count of Occurrences in FY25	Percent of Children Impacted
Cause: Defendant	1	0.0%
Cause: DSS	15	0.4%
Cause: Guardian <i>ad Litem</i>	0	0.0%
Cause: Insufficient court time for trial	4	0.1%
Cause: Other or cause not documented	9	0.3%
<b>Total for this Barrier Type</b>	<b>29</b>	<b>0.8%</b>

Barrier Type - No Permanency Planning Hearing	Count of Occurrences in FY25	Percent of Children Impacted
Cause: Defendant	5	0.1%
Cause: DSS	10	0.3%
Cause: Guardian <i>ad Litem</i>	0	0.0%
Cause: Insufficient court time for trial	5	0.1%
Cause: Other or cause not documented	11	0.3%
<b>Total for this Barrier Type</b>	<b>31</b>	<b>0.9%</b>

FOSTER CARE REVIEW DIVISION  
APPENDICES:  
BP CATEGORY 3 DETAILS

Category 3: Permanency

Requirement 1: Children in foster care will have timely court hearings and legal proceedings so as not to delay permanency.

**Barrier: Termination of Parental Rights (TPR) Hearing**

This Barrier was identified for 3.4% of children who were reviewed at least once during FY25.

Barrier Type - TPR Hearing Not Held Timely	Count of Occurrences in FY25	Percent of Children Impacted
Cause: Defendant	10	0.3%
Cause: DSS	31	0.9%
Cause: Guardian <i>ad Litem</i>	0	0.0%
Cause: Insufficient court time for trial	15	0.4%
Cause: Other or cause not documented	43	1.2%
<b>Total for this Barrier Type</b>	<b>99</b>	<b>2.8%</b>

Barrier Type - TPR Not Filed	Count of Occurrences in FY25	Percent of Children Impacted
Cause: Defendant	0	0.0%
Cause: DSS	15	0.4%
Cause: Guardian <i>ad Litem</i>	0	0.0%
Cause: Other or cause not documented	6	0.2%
<b>Total for this Barrier Type</b>	<b>21</b>	<b>0.6%</b>

FOSTER CARE REVIEW DIVISION  
APPENDICES:  
BP CATEGORY 3 DETAILS

Category 3: Permanency

Requirement 1: Children in foster care will have timely court hearings and legal proceedings so as not to delay permanency.

**Barrier: Other Legal Concerns**

This Barrier was identified for 0.4% of children who were reviewed at least once during FY25.

Barrier Type - Child Guardian <i>ad Litem</i> Not Appointed	Count of Occurrences in FY25	Percent of Children Impacted
Cause: Child guardian <i>ad litem</i> not appointed	0	0.0%
<b>Total for this Barrier Type</b>	<b>0</b>	<b>0.0%</b>

Barrier Type - Non-Compliance with Court Order	Count of Occurrences in FY25	Percent of Children Impacted
Cause: DSS	3	0.1%
Cause: Parent/Caregiver	5	0.1%
Cause: Other or cause not documented	4	0.1%
<b>Total for this Barrier Type</b>	<b>12</b>	<b>0.3%</b>

Barrier Type - Parent Guardian <i>ad Litem</i> Not Appointed	Count of Occurrences in FY25	Percent of Children Impacted
Cause: Parent guardian <i>ad litem</i> not appointed	3	0.1%
<b>Total for this Barrier Type</b>	<b>3</b>	<b>0.1%</b>

**FOSTER CARE REVIEW DIVISION**  
**APPENDICES:**  
**BP CATEGORY 3 DETAILS**

Category 3: Permanency

Requirement 2: DSS should make efforts to acquire a permanent home and plan for permanency for legally free children.

**Barrier: Adoption Referral**

This Barrier was identified for 1.2% of children who were reviewed at least once during FY25.

<b>Barrier Type - Delayed Referral</b>	<b>Count of Occurrences in FY25</b>	<b>Percent of Children Impacted</b>
Cause: Delayed referral	2	0.1%
<b>Total for this Barrier Type</b>	<b>2</b>	<b>0.1%</b>

<b>Barrier Type - No Referral</b>	<b>Count of Occurrences in FY25</b>	<b>Percent of Children Impacted</b>
Cause: No referral	42	1.2%
<b>Total for this Barrier Type</b>	<b>42</b>	<b>1.2%</b>

Category 3: Permanency

Requirement 2: DSS should make efforts to acquire a permanent home and plan for permanency for legally free children.

**Barrier: Adoption Services Referral Not Accepted**

This Barrier was identified for 0.4% of children who were reviewed at least once during FY25.

<b>Barrier Type - Child's Behaviors</b>	<b>Count of Occurrences in FY25</b>	<b>Percent of Children Impacted</b>
Cause: Child's behaviors	2	0.1%
<b>Total for this Barrier Type</b>	<b>2</b>	<b>0.1%</b>

<b>Barrier Type - DJJ-involved Youth</b>	<b>Count of Occurrences in FY25</b>	<b>Percent of Children Impacted</b>
Cause: DJJ-involved youth	0	0.0%
<b>Total for this Barrier Type</b>	<b>0</b>	<b>0.0%</b>

FOSTER CARE REVIEW DIVISION  
APPENDICES:  
BP CATEGORY 3 DETAILS

Category 3: Permanency

Requirement 2: DSS should make efforts to acquire a permanent home and plan for permanency for legally free children.

**Barrier: Adoption Services Referral Not Accepted (continued from previous page)**

This Barrier was identified for 0.4% of children who were reviewed at least once during FY25.

Barrier Type - Merits Hearing Not Held	Count of Occurrences in FY25	Percent of Children Impacted
Cause: Merits hearing not held	0	0.0%
<b>Total for this Barrier Type</b>	<b>0</b>	<b>0.0%</b>

Barrier Type - No Legally Free Letter	Count of Occurrences in FY25	Percent of Children Impacted
Cause: TPR is under appeal	10	0.3%
Cause: Other or cause not documented	0	0.0%
<b>Total for this Barrier Type</b>	<b>10</b>	<b>0.3%</b>

Barrier Type - TPR Not Completed	Count of Occurrences in FY25	Percent of Children Impacted
Cause: TPR not completed	1	0.0%
<b>Total for this Barrier Type</b>	<b>1</b>	<b>0.0%</b>

Barrier Type - Other	Count of Occurrences in FY25	Percent of Children Impacted
Cause: Other or cause not documented	2	0.1%
<b>Total for this Barrier Type</b>	<b>2</b>	<b>0.1%</b>

FOSTER CARE REVIEW DIVISION  
APPENDICES:  
BP CATEGORY 3 DETAILS

Category 3: Permanency

Requirement 2: DSS should make efforts to acquire a permanent home and plan for permanency for legally free children.

**Barrier: Legally Free But Not on Active Recruitment**

This Barrier was identified for 0.9% of children who were reviewed at least once during FY25.

Barrier Type - DJJ Placement and/or Criminal Charges	Count of Occurrences in FY25	Percent of Children Impacted
Cause: DJJ placement and/or criminal charges	1	0.0%
<b>Total for this Barrier Type</b>	<b>1</b>	<b>0.0%</b>

Barrier Type - Youth Refused/Not Interested in Being Adopted	Count of Occurrences in FY25	Percent of Children Impacted
Cause: Has other transition plan	12	0.3%
Cause: Inadequate adoption counseling	3	0.1%
<b>Total for this Barrier Type</b>	<b>15</b>	<b>0.4%</b>

Barrier Type - Mental/Behavioral Health	Count of Occurrences in FY25	Percent of Children Impacted
Cause: Mental/Behavioral health	9	0.3%
<b>Total for this Barrier Type</b>	<b>9</b>	<b>0.3%</b>

Barrier Type - Other	Count of Occurrences in FY25	Percent of Children Impacted
Cause: Other or cause not documented	8	0.2%
<b>Total for this Barrier Type</b>	<b>8</b>	<b>0.2%</b>

FOSTER CARE REVIEW DIVISION  
APPENDICES:  
BP CATEGORY 3 DETAILS

Category 3: Permanency

Requirement 2: DSS should make efforts to acquire a permanent home and plan for permanency for legally free children.

**Barrier: APPLA is the Permanent Plan and Chafee Services Have Not Been Assessed For or Utilized Adequately**

This Barrier was identified for 1.1% of children who were reviewed at least once during FY25.

Barrier Type - Inadequate Assessment of Youth's Needs	Count of Occurrences in FY25	Percent of Children Impacted
Cause: Inadequate assessment of youth's needs	12	0.3%
<b>Total for this Barrier Type</b>	<b>12</b>	<b>0.3%</b>

Barrier Type - Inadequate Use of Available Chafee Services	Count of Occurrences in FY25	Percent of Children Impacted
Cause: Inadequate use of available Chafee services	8	0.2%
<b>Total for this Barrier Type</b>	<b>8</b>	<b>0.2%</b>

Barrier Type - Inappropriate Plan of APPLA	Count of Occurrences in FY25	Percent of Children Impacted
Cause: Inappropriate plan of APPLA	2	0.1%
<b>Total for this Barrier Type</b>	<b>2</b>	<b>0.1%</b>

Barrier Type - No Transition Plan for Youth 17 Years Old	Count of Occurrences in FY25	Percent of Children Impacted
Cause: No transition plan for youth 17 years old	17	0.5%
<b>Total for this Barrier Type</b>	<b>17</b>	<b>0.5%</b>

**FOSTER CARE REVIEW DIVISION**  
**APPENDICES:**  
**BP CATEGORY 3 DETAILS**

Category 3: Permanency

Requirement 2: DSS should make efforts to acquire a permanent home and plan for permanency for legally free children.

**Barrier: Child Specific Recruitment Efforts**

This Barrier was identified for 1.2% of children who were reviewed at least once during FY25.

<b>Barrier Type - Siblings Not Being Recruited Together</b>	<b>Count of Occurrences in FY25</b>	<b>Percent of Children Impacted</b>
Cause: Children's behavioral needs cannot be met together	15	0.4%
Cause: Safety concern	0	0.0%
Cause: Other or cause not documented	15	0.4%
<b>Total for this Barrier Type</b>	<b>30</b>	<b>0.8%</b>

<b>Barrier Type - Adopt US Kids</b>	<b>Count of Occurrences in FY25</b>	<b>Percent of Children Impacted</b>
Cause: Adopt US Kids	0	0.0%
<b>Total for this Barrier Type</b>	<b>0</b>	<b>0.0%</b>

<b>Barrier Type - No Heart Gallery</b>	<b>Count of Occurrences in FY25</b>	<b>Percent of Children Impacted</b>
Cause: No Heart Gallery	8	0.2%
<b>Total for this Barrier Type</b>	<b>8</b>	<b>0.2%</b>

<b>Barrier Type - Not Listed on Seedlings</b>	<b>Count of Occurrences in FY25</b>	<b>Percent of Children Impacted</b>
Cause: Not listed on Seedlings	3	0.1%
<b>Total for this Barrier Type</b>	<b>3</b>	<b>0.1%</b>

**FOSTER CARE REVIEW DIVISION**  
**APPENDICES:**  
**BP CATEGORY 3 DETAILS**

Category 3: Permanency

Requirement 2: DSS should make efforts to acquire a permanent home and plan for permanency for legally free children.

**Barrier: Unable to Find an Adoptive Resource**

This Barrier was identified for 3.9% of children who were reviewed at least once during FY25.

<b>Barrier Type - No Matching Families for Child's Needs</b>	<b>Count of Occurrences in FY25</b>	<b>Percent of Children Impacted</b>
Cause: Medical needs	10	0.3%
Cause: Mental/Behavioral health needs	80	2.2%
Cause: LGBTQ+	0	0.0%
Cause: Other or cause undocumented	14	0.4%
<b>Total for this Barrier Type</b>	<b>104</b>	<b>2.9%</b>

<b>Barrier Type - No Matching Families for Age</b>	<b>Count of Occurrences in FY25</b>	<b>Percent of Children Impacted</b>
Cause: No matching families for age	10	0.3%
<b>Total for this Barrier Type</b>	<b>10</b>	<b>0.3%</b>

<b>Barrier Type - No Matching Families for Gender</b>	<b>Count of Occurrences in FY25</b>	<b>Percent of Children Impacted</b>
Cause: No matching families for gender	0	0.0%
<b>Total for this Barrier Type</b>	<b>0</b>	<b>0.0%</b>

<b>Barrier Type - No Matching Families for Sibling Group</b>	<b>Count of Occurrences in FY25</b>	<b>Percent of Children Impacted</b>
Cause: No matching families for sibling group	26	0.7%
<b>Total for this Barrier Type</b>	<b>26</b>	<b>0.7%</b>

If the information in this report is used in future publications, please use the following citation information:

South Carolina Foster Care Review Division. (2026). *South Carolina Division of Foster Care Review Fiscal Year 2025 Annual Report*. South Carolina Department of Children's Advocacy. Columbia, SC: University of South Carolina Press. [https://fcrd.sc.gov/sites/fcrb/files/Documents/annual\\_report/FCRB\\_2025\\_Annual\\_Report.pdf](https://fcrd.sc.gov/sites/fcrb/files/Documents/annual_report/FCRB_2025_Annual_Report.pdf)